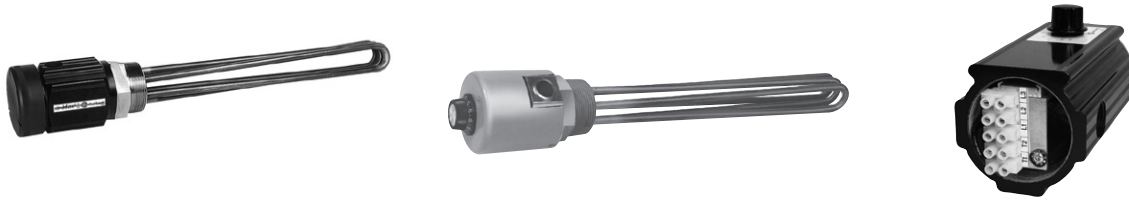


Screwplug Heaters - CX



Application

Screwplug heaters are primarily used to heat liquids in tanks or vessels. To do so safely and reliably requires that the heating elements remain fully immersed in the liquid. Liquids such as water, oils, trichlorethylene, etc. can be heated through natural convection currents created by the immersed elements.

Although electricity costs are generally higher than gas or oil, it can be demonstrated that a Caloritech™ immersion heater is often your best choice. The electric heater provides close to 100% efficiency, is safer and easier to control and is usually cheaper to install.

Terminal Block Simplifies Wiring

All thermostat equipped screwplug heaters with moisture or explosion-proof housings feature a convenient terminal block mounted to a slide out trolley.

This unique Caloritech™ feature simplifies installation and reduces maintenance.

Installation

Listed heaters have standard 1" to 2 1/2" NPT tapered plugs. Any other size or type of plug is available on special order. The heater is installed through a threaded half coupling located in the vessel wall well below the minimum liquid level but spaced sufficiently above the bottom to allow for sludge build-up which should never be allowed to cover any part of the elements.

Horizontal installation is preferred even though heater replacement will require draining of the tank. Vertical installation is sometimes possible but it is best that you contact the factory for advice prior to purchase.

Operation

For an immersion heater to transfer heat it must establish a balance between convection currents and the temperature difference between itself and the liquid. Viscous liquids which retard convection currents are the most difficult to heat. Care must be exercised to ensure that the required rate of heat transfer from the heating elements is achieved without overheating the element and the liquid resulting in coking. This is generally achieved through the selection of heater watt density.

Heaters immersed in liquids, such as water with high calcium and magnesium content, phosphates or eluate solutions, have a tendency to precipitate their solids over the elements on heating. These heaters require scheduled maintenance to remove scale build up which may thermally insulate the elements and reduce their service life.

Selection

Proper selection of the screwplug heater is required to maximize service life. Once the wattage requirement is established decide on heater voltage and phase. Remember that unrealistic heat-up time requirements will increase equipment and operating costs.

The tables list, under "watt density", the required heat transfer rate from the various heaters. Refer to Section D of the Caloritech™ catalog for guidance on the acceptable watt density for your application. If a heater is not listed with the density you require we can fabricate to suit.

Of equal importance is the selection of the materials of construction which will resist corrosion and not wear away or contaminate the liquid. Refer to the corrosion guide in Section D for a list of the standard materials for various solutions. Also see page B26 for discussion on watt density.

The heaters are not guaranteed against corrosion since Thermon Heating Systems has no control over the liquid type, concentration or temperature of the solution. Consult your factory representative or your chemical supplier for recommendation on materials for your solution. Recommendations are not implied guarantees.

Warning - Fire Hazard

The heaters listed in the catalog may occasionally malfunction in normal use and if operated in the presence of explosive or combustible materials may cause fires. Do not operate in the presence of explosive or combustible materials. Observe fire prevention precautions and consult the local sales office or contact Thermon Heating Systems for proper application and installation instructions.

The thermostat controls function as temperature controls. Because they do not fail safe, an approved temperature and/or pressure safety control may be required for safe operation. Inclusion of consumer warnings on assembled products containing these elements and thermostats is recommended.

Heaters with 1" and 1 1/4" Plugs

Application

Type CXC heaters are used primarily for water heating and have brass screwplugs and copper sheaths.

Type CXF are used primarily for oil heating and have steel screwplugs. Low watt density heaters are used in heavier, non-circulated oils. Higher watt density heaters are suitable for light oils or in forced oil circulation loops. Incoloy® elements are silver brazed into a steel screwplug.

Built-in Thermostats

Standard built-in thermostat is a one pole device limited to 240V 25 amp. Whenever the heater voltage exceeds 240V or the heater current exceeds 25 amps or for three phase supply, the thermostat is intended for pilot duty only and is not factory wired to the elements. See Section F of the Caloritech™ catalog for selection of the contactor and control transformer you may require in these instances.

To Order Specify

- Quantity
- Catalog number
- Voltage
- Wattage
- Special features



Table 1 – Screwplug Heaters (One Element) - 1" NPT

| | kW | Immersion Length 'B' | | Standard Voltages 1 Phase Only | General Purpose Terminal Box | | NEMA 4 Terminal Box | | Explosion-Proof Terminal Box | | Net Weight | |
|--|------|----------------------|-----|--------------------------------|------------------------------|---|---------------------|---|------------------------------|---|------------|----|
| | | in | mm | | Without Thermostat | With Thermostat 50°F to 250°F (10°C to 120°C) | Without Thermostat | With Thermostat 50°F to 250°F (10°C to 120°C) | Without Thermostat | With Thermostat 50°F to 250°F (10°C to 120°C) | lbs | kg |
| Copper Sheath Brass Plug 80 W/in ² (12.4 W/cm ²) | 0.50 | 5.5 | 140 | 120 | CXC105P111 | CXCT105P111 | CXC105P1R11 | CXCT105P1R11 | CXC105P1X11 | CXCT105P1X11 | 2.2 | 1 |
| | | | | 208 | CXC105P121 | CXCT105P121 | CXC105P1R21 | CXCT105P1R21 | CXC105P1X21 | CXCT105P1X21 | | |
| | | | | 240 | CXC105P131 | CXCT105P131 | CXC105P1R31 | CXCT105P1R31 | CXC105P1X31 | CXCT105P1X31 | | |
| | 0.75 | 5.5 | 140 | 120 | CXC107P111 | CXCT107P111 | CXC107P1R11 | CXCT107P1R11 | CXC107P1X11 | CXCT107P1X11 | | |
| | | | | 208 | CXC107P121 | CXCT107P121 | CXC107P1R21 | CXCT107P1R21 | CXC107P1X21 | CXCT107P1X21 | | |
| | | | | 240 | CXC107P131 | CXCT107P131 | CXC107P1R31 | CXCT107P1R31 | CXC107P1X31 | CXCT107P1X31 | | |
| | 1.00 | 7.1 | 180 | 120 | CXC110P111 | CXCT110P111 | CXC110P1R11 | CXCT110P1R11 | CXC110P1X11 | CXCT110P1X11 | | |
| | | | | 208 | CXC110P121 | CXCT110P121 | CXC110P1R21 | CXCT110P1R21 | CXC110P1X21 | CXCT110P1X21 | | |
| | | | | 240 | CXC110P131 | CXCT110P131 | CXC110P1R31 | CXCT110P1R31 | CXC110P1X31 | CXCT110P1X31 | | |
| | 1.50 | 10.6 | 270 | 120 | CXC115P111 | CXCT115P111 | CXC115P1R11 | CXCT115P1R11 | CXC115P1X11 | CXCT115P1X11 | | |
| | | | | 208 | CXC115P121 | CXCT115P121 | CXC115P1R21 | CXCT115P1R21 | CXC115P1X21 | CXCT115P1X21 | | |
| | | | | 240 | CXC115P131 | CXCT115P131 | CXC115P1R31 | CXCT115P1R31 | CXC115P1X31 | CXCT115P1X31 | | |
| | 2.00 | 7.5 | 190 | 120 | CXC120P111 | CXCT120P111 | CXC120P1R11 | CXCT120P1R11 | CXC120P1X11 | CXCT120P1X11 | | |
| | | | | 208 | CXC120P121 | CXCT120P121 | CXC120P1R21 | CXCT120P1R21 | CXC120P1X21 | CXCT120P1X21 | | |
| | | | | 240 | CXC120P131 | CXCT120P131 | CXC120P1R31 | CXCT120P1R31 | CXC120P1X31 | CXCT120P1X31 | | |
| | 3.00 | 10.8 | 275 | 120 | CXC130P111 | CXCT130P111 | CXC130P1R11 | CXCT130P1R11 | CXC130P1X11 | CXCT130P1X11 | | |
| | | | | 208 | CXC130P121 | CXCT130P121 | CXC130P1R21 | CXCT130P1R21 | CXC130P1X21 | CXCT130P1X21 | | |
| | | | | 240 | CXC130P131 | CXCT130P131 | CXC130P1R31 | CXCT130P1R31 | CXC130P1X31 | CXCT130P1X31 | | |
| | 5.00 | 16.9 | 430 | 120 | CXC150P111 | CXCT150P111 | CXC150P1R11 | CXCT150P1R11 | CXC150P1X11 | CXCT150P1X11 | | |
| | | | | 208 | CXC150P121 | CXCT150P121 | CXC150P1R21 | CXCT150P1R21 | CXC150P1X21 | CXCT150P1X21 | | |
| | | | | 240 | CXC150P131 | CXCT150P131 | CXC150P1R31 | CXCT150P1R31 | CXC150P1X31 | CXCT150P1X31 | | |

Table 1 – Screwplug Heaters (One Element) - 1" NPT (Cont'd)

| | kW | Immersion Length 'B' | | Standard Voltages 1 Phase Only | General Purpose Terminal Box | | NEMA 4 Terminal Box | | Explosion-Proof Terminal Box | | Net Weight | |
|--|------|----------------------|-----|--------------------------------|------------------------------|---|---------------------|---|------------------------------|---|------------|----|
| | | in | mm | | Without Thermostat | With Thermostat 50°F to 250°F (10°C to 120°C) | Without Thermostat | With Thermostat 50°F to 250°F (10°C to 120°C) | Without Thermostat | With Thermostat 50°F to 250°F (10°C to 120°C) | lbs | kg |
| | | | | | | | | | | | | |
| Steel Plug Incoloy® Sheath 23 watts in ² (3.4 watts cm ²) | 0.30 | 7.5 | 190 | 120 | CXF103P111 | CXFT103P111 | CXF103P1R11 | CXFT103P1R11 | CXF103P1X11 | CXFT103P1X11 | 2.2 | 1 |
| | | | | 208 | CXF103P121 | CXFT103P121 | CXF103P1R21 | CXFT103P1R21 | CXF103P1X21 | CXFT103P1X21 | | |
| | | | | 240 | CXF103P131 | CXFT103P131 | CXF103P1R31 | CXFT103P1R31 | CXF103P1X31 | CXFT103P1X31 | | |
| | 0.50 | 8.9 | 225 | 120 | CXF105P111 | CXFT105P111 | CXF105P1R11 | CXFT105P1R11 | CXF105P1X11 | CXFT105P1X11 | 2.2 | 1 |
| | | | | 208 | CXF105P121 | CXFT105P121 | CXF105P1R21 | CXFT105P1R21 | CXF105P1X21 | CXFT105P1X21 | | |
| | | | | 240 | CXF105P131 | CXFT105P131 | CXF105P1R31 | CXFT105P1R31 | CXF105P1X31 | CXFT105P1X31 | | |
| | 0.70 | 11 | 280 | 120 | CXF107P111 | CXFT107P111 | CXF107P1R11 | CXFT107P1R11 | CXF107P1X11 | CXFT107P1X11 | 4.4 | 2 |
| | | | | 208 | CXF107P121 | CXFT107P121 | CXF107P1R21 | CXFT107P1R21 | CXF107P1X21 | CXFT107P1X21 | | |
| | | | | 240 | CXF107P131 | CXFT107P131 | CXF107P1R31 | CXFT107P1R31 | CXF107P1X31 | CXFT107P1X31 | | |
| | 0.90 | 12 | 305 | 120 | CXF109P111 | CXFT109P111 | CXF109P1R11 | CXFT109P1R11 | CXF109P1X11 | CXFT109P1X11 | 4.4 | 2 |
| | | | | 208 | CXF109P121 | CXFT109P121 | CXF109P1R21 | CXFT109P1R21 | CXF109P1X21 | CXFT109P1X21 | | |
| | | | | 240 | CXF109P131 | CXFT109P131 | CXF109P1R31 | CXFT109P1R31 | CXF109P1X31 | CXFT109P1X31 | | |
| Steel Plug Incoloy® Sheath 15 W/in ² (2.3 W/cm ²) | 0.10 | 5 | 127 | 120 | CXF101P1511 | CXFT101P1511 | CXF101P15R11 | CXFT101P15R11 | CXF101P15X11 | CXFT101P15X11 | 2.2 | 1 |
| | 0.15 | 7 | 178 | 120 | CXF101P1711 | CXFT101P1711 | CXF101P17R11 | CXFT101P17R11 | CXF101P17X11 | CXFT101P17X11 | 2.2 | 1 |
| | 0.20 | 7.5 | 229 | 120 | CXF102P111 | CXFT102P111 | CXF102P1R11 | CXFT102P1R11 | CXF102P1X11 | CXFT102P1X11 | 2.2 | 1 |
| | | | | 208 | CXF102P121 | CXFT102P121 | CXF102P1R21 | CXFT102P1R21 | CXF102P1X21 | CXFT102P1X21 | | |
| | | | | 240 | CXF102P131 | CXFT102P131 | CXF102P1R31 | CXFT102P1R31 | CXF102P1X31 | CXFT102P1X31 | | |
| | 0.25 | 10 | 279 | 120 | CXF102P11011 | CXFT102P11011 | CXF102P110R11 | CXFT102P110R11 | CXF102P110X11 | CXFT102P110X11 | 4.4 | 2 |
| | | | | 208 | CXF102P11021 | CXFT102P11021 | CXF102P110R21 | CXFT102P110R21 | CXF102P110X21 | CXFT102P110X21 | | |
| | | | | 240 | CXF102P11031 | CXFT102P11031 | CXF102P110R31 | CXFT102P110R31 | CXF102P110X31 | CXFT102P110X31 | | |
| | 0.40 | 9.4 | 239 | 120 | CXF104P111 | CXFT104P111 | CXF104P1R11 | CXFT104P1R11 | CXF104P1X11 | CXFT104P1X11 | 4.4 | 2 |
| | | | | 208 | CXF104P121 | CXFT104P121 | CXF104P1R21 | CXFT104P1R21 | CXF104P1X21 | CXFT104P1X21 | | |
| | | | | 240 | CXF104P131 | CXFT104P131 | CXF104P1R31 | CXFT104P1R31 | CXF104P1X31 | CXFT104P1X31 | | |
| | 0.50 | 10 | 254 | 120 | CXF105P11011 | CXFT105P11011 | CXF105P110R11 | CXFT105P110R11 | CXF105P110X11 | CXFT105P110X11 | 4.4 | 2 |
| | | | | 208 | CXF105P11021 | CXFT105P11021 | CXF105P110R21 | CXFT105P110R21 | CXF105P110X21 | CXFT105P110X21 | | |
| | | | | 240 | CXF105P11031 | CXFT105P11031 | CXF105P110R31 | CXFT105P110R31 | CXF105P110X31 | CXFT105P110X31 | | |
| | 0.60 | 11 | 279 | 120 | CXF106P111 | CXFT106P111 | CXF106P1R11 | CXFT106P1R11 | CXF106P1X11 | CXFT106P1X11 | 4.4 | 2 |
| | | | | 208 | CXF106P121 | CXFT106P121 | CXF106P1R21 | CXFT106P1R21 | CXF106P1X21 | CXFT106P1X21 | | |
| | | | | 240 | CXF106P131 | CXFT106P131 | CXF106P1R31 | CXFT106P1R31 | CXF106P1X31 | CXFT106P1X31 | | |
| | 0.75 | 15 | 381 | 120 | CXF107P11511 | CXFT107P11511 | CXF107P115R11 | CXFT107P115R11 | CXF107P115X11 | CXFT107P115X11 | 4.4 | 2 |
| | | | | 208 | CXF107P11521 | CXFT107P11521 | CXF107P115R21 | CXFT107P115R21 | CXF107P115X21 | CXFT107P115X21 | | |
| | | | | 240 | CXF107P11531 | CXFT107P11531 | CXF107P115R31 | CXFT107P115R31 | CXF107P115X31 | CXFT107P115X31 | | |
| | 1.0 | 19 | 483 | 120 | CXF110P11911 | CXFT110P11911 | CXF110P119R11 | CXFT110P119R11 | CXF110P119X11 | CXFT110P119X11 | 4.4 | 2 |
| 208 | | | | CXF110P11921 | CXFT110P11921 | CXF110P119R21 | CXFT110P119R21 | CXF110P119X21 | CXFT110P119X21 | | | |
| 240 | | | | CXF110P11931 | CXFT110P11931 | CXF110P119R31 | CXFT110P119R31 | CXF110P119X31 | CXFT110P119X31 | | | |

To Order Specify

- Quantity
- Catalog number
- Voltage
- Wattage
- Special features

Table 2 – Screwplug Heaters (Two Elements) - 1 ¼" NPT

| | kW | Immersion Length 'B' | | Standard Voltages 1 Phase Only | General Purpose Terminal Box | | NEMA 4 Terminal Box | | Explosion-Proof Terminal Box | | Net Weight | | |
|--|--|----------------------|-----|--------------------------------|------------------------------|---|---------------------|---|------------------------------|---|----------------|-----|---|
| | | in | mm | | Without Thermostat | With Thermostat 50°F to 250°F (10°C to 120°C) | Without Thermostat | With Thermostat 50°F to 250°F (10°C to 120°C) | Without Thermostat | With Thermostat 50°F to 250°F (10°C to 120°C) | lbs | kg | |
| | | | | | | | | | | | | | |
| Copper Sheath Brass Plug 80 W/in ² (12.4 W/cm ²) | 1.5 | 5.7 | 145 | 120 | CXC215P1211 | CXCT215P1211 | CXC215P12R11 | CXCT215P12R11 | CXC215P12X11 | CXCT215P12X11 | 8.8 | 4 | |
| | | | | 208 | CXC215P1221 | CXCT215P1221 | CXC215P12R21 | CXCT215P12R21 | CXC215P12X21 | CXCT215P12X21 | | | |
| | | | | 240 | CXC215P1231 | CXCT215P1231 | CXC215P12R31 | CXCT215P12R31 | CXC215P12X31 | CXCT215P12X31 | | | |
| | 2.0 | 7.3 | 285 | 120 | CXC220P1211 | CXCT220P1211 | CXC220P12R11 | CXCT220P12R11 | CXC220P12X11 | CXCT220P12X11 | 8.8 | 4 | |
| | | | | 208 | CXC220P1221 | CXCT220P1221 | CXC220P12R21 | CXCT220P12R21 | CXC220P12X21 | CXCT220P12X21 | | | |
| | | | | 240 | CXC220P1231 | CXCT220P1231 | CXC220P12R31 | CXCT220P12R31 | CXC220P12X31 | CXCT220P12X31 | | | |
| Incoloy® Sheath Steel Plug 23 W/in ² (3.4 W/cm ²) | 1.0 | 13 | 330 | 120 | CXF210P121311 | CXFT210P121311 | CXF210P1213R11 | CXFT210P1213R11 | CXF210P1213X11 | CXFT210P1213X11 | 8.8 | 4 | |
| | | | | 208 | CXF210P121321 | CXFT210P121321 | CXF210P1213R21 | CXFT210P1213R21 | CXF210P1213X21 | CXFT210P1213X21 | | | |
| | | | | 240 | CXF210P121331 | CXFT210P121331 | CXF210P1213R31 | CXFT210P1213R31 | CXF210P1213X31 | CXFT210P1213X31 | | | |
| | 1.5 | 18 | 457 | 120 | CXF215P121811 | CXFT215P121811 | CXF215P1218R11 | CXFT215P1218R11 | CXF215P1218X11 | CXFT215P1218X11 | 11 | 5 | |
| | | | | 208 | CXF215P121821 | CXFT215P121821 | CXF215P1218R21 | CXFT215P1218R21 | CXF215P1218X21 | CXFT215P1218X21 | | | |
| | | | | 240 | CXF215P121831 | CXFT215P121831 | CXF215P1218R31 | CXFT215P1218R31 | CXF215P1218X31 | CXFT215P1218X31 | | | |
| | 2.0 | 24 | 610 | 120 | CXF220P122411 | CXFT220P122411 | CXF220P1224R11 | CXFT220P1224R11 | CXF220P1224X11 | CXFT215P1218X11 | 11 | 5 | |
| | | | | 208 | CXF220P122421 | CXFT220P122421 | CXF220P1224R21 | CXFT220P1224R21 | CXF220P1224X21 | CXFT215P1218X21 | | | |
| | | | | 240 | CXF220P122431 | CXFT220P122431 | CXF220P1224R31 | CXFT220P1224R31 | CXF220P1224X31 | CXFT215P1218X31 | | | |
| | Incoloy® Sheath Steel Plug 15 W/in ² (2.3 W/cm ²) | 0.20 | 5 | 127 | 120 | CXF202P12511 | CXFT202P12511 | CXF202P125R11 | CXFT202P125R11 | CXF202P125X11 | CXFT202P125X11 | 8.8 | 4 |
| | | | | | 208 | CXF202P12521 | CXFT202P12521 | CXF202P125R21 | CXFT202P125R21 | CXF202P125X21 | CXFT202P125X21 | | |
| | | | | | 240 | CXF202P12531 | CXFT202P12531 | CXF202P125R31 | CXFT202P125R31 | CXF202P125X31 | CXFT202P125X31 | | |
| 0.30 | | 7 | 178 | 120 | CXF203P12711 | CXFT203P12711 | CXF203P127R11 | CXFT203P127R11 | CXF203P127X11 | CXFT203P127X11 | 8.8 | 4 | |
| | | | | 208 | CXF203P12721 | CXFT203P12721 | CXF203P127R21 | CXFT203P127R21 | CXF203P127X21 | CXFT203P127X21 | | | |
| | | | | 240 | CXF203P12731 | CXFT203P12731 | CXF203P127R31 | CXFT203P127R31 | CXF203P127X31 | CXFT203P127X31 | | | |
| 0.40 | | 9 | 229 | 120 | CXF204P12911 | CXFT204P12911 | CXF204P129R11 | CXFT204P129R11 | CXF204P129X11 | CXFT204P129X11 | 8.8 | 4 | |
| | | | | 208 | CXF204P12921 | CXFT204P12921 | CXF204P129R21 | CXFT204P129R21 | CXF204P129X21 | CXFT204P129X21 | | | |
| | | | | 240 | CXF204P12931 | CXFT204P12931 | CXF204P129R31 | CXFT204P129R31 | CXF204P129X31 | CXFT204P129X31 | | | |
| 0.50 | | 11 | 279 | 120 | CXF205P121111 | CXFT205P121111 | CXF205P1211R11 | CXFT205P1211R11 | CXF205P1211X11 | CXFT205P1211X11 | 8.8 | 4 | |
| | | | | 208 | CXF205P121121 | CXFT205P121121 | CXF205P1211R21 | CXFT205P1211R21 | CXF205P1211X21 | CXFT205P1211X21 | | | |
| | | | | 240 | CXF205P121131 | CXFT205P121131 | CXF205P1211R31 | CXFT205P1211R31 | CXF205P1211X31 | CXFT205P1211X31 | | | |
| 0.60 | | 11 | 279 | 120 | CXF206P1211 | CXFT206P1211 | CXF206P12R11 | CXFT206P12R11 | CXF206P12X11 | CXFT206P12X11 | 11 | 5 | |
| | | | | 208 | CXF206P1221 | CXFT206P1221 | CXF206P12R21 | CXFT206P12R21 | CXF206P12X21 | CXFT206P12X21 | | | |
| | | | | 240 | CXF206P1231 | CXFT206P1231 | CXF206P12R31 | CXFT206P12R31 | CXF206P12X31 | CXFT206P12X31 | | | |
| 0.75 | | 15 | 381 | 120 | CXF207P121511 | CXFT207P121511 | CXF207P1215R11 | CXFT207P1215R11 | CXF207P1215X11 | CXFT207P1215X11 | 11 | 5 | |
| | | | | 208 | CXF207P121521 | CXFT207P121521 | CXF207P1215R21 | CXFT207P1215R21 | CXF207P1215X21 | CXFT207P1215X21 | | | |
| | | | | 240 | CXF207P121531 | CXFT207P121531 | CXF207P1215R31 | CXFT207P1215R31 | CXF207P1215X31 | CXFT207P1215X31 | | | |
| 1.0 | | 19 | 483 | 120 | CXF210P121911 | CXFT210P121911 | CXF210P1219R11 | CXFT210P1219R11 | CXF210P1219X11 | CXFT210P1219X11 | 13.2 | 6 | |
| | | | | 208 | CXF210P121921 | CXFT210P121921 | CXF210P1219R21 | CXFT210P1219R21 | CXF210P1219X21 | CXFT210P1219X21 | | | |
| | | | | 240 | CXF210P121931 | CXFT210P121931 | CXF210P1219R31 | CXFT210P1219R31 | CXF210P1219X31 | CXFT210P1219X31 | | | |
| 1.5 | | 27 | 686 | 120 | CXF215P122711 | CXFT215P122711 | CXF215P1227R11 | CXFT215P1227R11 | CXF215P1227X11 | CXFT215P1227X11 | 13.2 | 6 | |
| | | | | 208 | CXF215P122721 | CXFT215P122721 | CXF215P1227R21 | CXFT215P1227R21 | CXF215P1227X21 | CXFT215P1227X21 | | | |
| | | | | 240 | CXF215P122731 | CXFT215P122731 | CXF215P1227R31 | CXFT215P1227R31 | CXF215P1227X31 | CXFT215P1227X31 | | | |

Heaters with 2" and 2 1/2" Plugs

Application

Type CXC heaters are used primarily for water heating and have brass screwplugs and copper sheaths.

Type CXF are used primarily for oil heating and have steel screwplugs. Low watt density heaters are used in heavier, non-circulated oils. Higher watt density heaters are suitable for light oils or in forced oil circulation loops. Incoloy® elements are silver brazed into a steel screwplug.

Type CXI heaters are used primarily for heating mildly corrosive solutions and use higher density Incoloy® elements welded into a stainless steel screwplug.

Built-in Thermostats

Standard built-in thermostat is a one pole device limited to 240V 25 amp. Whenever the heater voltage exceeds 240V or the heater current exceeds 25 amps or for three phase supply, the thermostat is intended for pilot duty only and is not factory wired to the elements. See Section F of the Caloritech™ catalog for selection of the contactor and control transformer you may require in these instances.

To Order Specify

- Quantity
- Catalog number
- Voltage
- Wattage
- Special features



Table 3 – Screwplug Heaters (Two Elements) - 2" NPT

| | kW | Immersion Length 'B' | | Standard Voltages 1 Phase Only | General Purpose Terminal Box | | NEMA 4 Terminal Box | | Explosion-Proof Terminal Box | | Net Weight | |
|--|-----|----------------------|-----|--------------------------------|------------------------------|---|---------------------|---|------------------------------|---|------------|----|
| | | in | mm | | Without Thermostat | With Thermostat 50°F to 250°F (10°C to 120°C) | Without Thermostat | With Thermostat 50°F to 250°F (10°C to 120°C) | Without Thermostat | With Thermostat 50°F to 250°F (10°C to 120°C) | lbs | kg |
| Copper Sheath Brass Plug 54 to 60 W/in ² (8.3 to 9.3 W/cm ²) | 1.5 | 7.9 | 201 | 120 | CXC215P211 | CXCT215P211 | CXC215P2R11 | CXCT215P2R11 | CXC215P2X11 | CXCT215P2X11 | 8.8 | 4 |
| | | | | 208 | CXC215P221 | CXCT215P221 | CXC215P2R21 | CXCT215P2R21 | CXC215P2X21 | CXCT215P2X21 | | |
| | | | | 240 | CXC215P231 | CXCT215P231 | CXC215P2R31 | CXCT215P2R31 | CXC215P2X31 | CXCT215P2X31 | | |
| | | | | 480 | CXC215P271 | CXCT215P271 | CXC215P2R71 | CXCT215P2R71 | CXC215P2X71 | CXCT215P2X71 | | |
| | | | | 600 | CXC215P281 | CXCT215P281 | CXC215P2R81 | CXCT215P2R81 | CXC215P2X81 | CXCT215P2X81 | | |
| | 2.0 | 7.9 | 201 | 120 | CXC220P211 | CXCT220P211 | CXC220P2R11 | CXCT220P2R11 | CXC220P2X11 | CXCT220P2X11 | 8.8 | 4 |
| | | | | 208 | CXC220P221 | CXCT220P221 | CXC220P2R21 | CXCT220P2R21 | CXC220P2X21 | CXCT220P2X21 | | |
| | | | | 240 | CXC220P231 | CXCT220P231 | CXC220P2R31 | CXCT220P2R31 | CXC220P2X31 | CXCT220P2X31 | | |
| | | | | 480 | CXC220P271 | CXCT220P271 | CXC220P2R71 | CXCT220P2R71 | CXC220P2X71 | CXCT220P2X71 | | |
| | | | | 600 | CXC220P281 | CXCT220P281 | CXC220P2R81 | CXCT220P2R81 | CXC220P2X81 | CXCT220P2X81 | | |
| | 3.0 | 11.8 | 300 | 120 | CXC230P211 | CXCT230P211 | CXC230P2R11 | CXCT230P2R11 | CXC230P2X11 | CXCT230P2X11 | 11 | 5 |
| | | | | 208 | CXC230P221 | CXCT230P221 | CXC230P2R21 | CXCT230P2R21 | CXC230P2X21 | CXCT230P2X21 | | |
| | | | | 240 | CXC230P231 | CXCT230P231 | CXC230P2R31 | CXCT230P2R31 | CXC230P2X31 | CXCT230P2X31 | | |
| | | | | 480 | CXC230P271 | CXCT230P271 | CXC230P2R71 | CXCT230P2R71 | CXC230P2X71 | CXCT230P2X71 | | |
| | | | | 600 | CXC230P281 | CXCT230P281 | CXC230P2R81 | CXCT230P2R81 | CXC230P2X81 | CXCT230P2X81 | | |

Table 3 – Screwplug Heaters (Two Elements) - 2" NPT (Cont'd)

| | kW | Immersion Length 'B' | | Standard Voltages 1 Phase Only | General Purpose Terminal Box | | | NEMA 4 Terminal Box | | Explosion-Proof Terminal Box | | Net Weight | |
|--|------|----------------------|------|--------------------------------|------------------------------|---|--------------------|---|--------------------|---|------|------------|--|
| | | in | mm | | Without Thermostat | With Thermostat 50°F to 250°F (10°C to 120°C) | Without Thermostat | With Thermostat 50°F to 250°F (10°C to 120°C) | Without Thermostat | With Thermostat 50°F to 250°F (10°C to 120°C) | lbs | kg | |
| | | | | | | | | | | | | | |
| Copper Sheath Brass Plug 54 to 60 W/in ² (8.3 to 9.3 W/cm ²) | 4.0 | 17.7 | 450 | 208 | CXC240P221 | CXCT240P221 | CXC240P2R21 | CXCT240P2R21 | CXC240P2X21 | CXCT240P2X21 | 11 | 5 | |
| | | | | 240 | CXC240P231 | CXCT240P231 | CXC240P2R31 | CXCT240P2R31 | CXC240P2X31 | CXCT240P2X31 | | | |
| | | | | 480 | CXC240P271 | CXCT240P271 | CXC240P2R71 | CXCT240P2R71 | CXC240P2X71 | CXCT240P2X71 | | | |
| | | | | 600 | CXC240P281 | CXCT240P281 | CXC240P2R81 | CXCT240P2R81 | CXC240P2X81 | CXCT240P2X81 | | | |
| | 5.0 | 21.7 | 551 | 208 | CXC250P221 | CXCT250P221 | CXC250P2R21 | CXCT250P2R21 | CXC250P2X21 | CXCT250P2X21 | 11 | 5 | |
| | | | | 240 | CXC250P231 | CXCT250P231 | CXC250P2R31 | CXCT250P2R31 | CXC250P2X31 | CXCT250P2X31 | | | |
| | | | | 480 | CXC250P271 | CXCT250P271 | CXC250P2R71 | CXCT250P2R71 | CXC250P2X71 | CXCT250P2X71 | | | |
| | | | | 600 | CXC250P281 | CXCT250P281 | CXC250P2R81 | CXCT250P2R81 | CXC250P2X81 | CXCT250P2X81 | | | |
| | 6.0 | 25.6 | 650 | 208 | CXC260P221 | CXCT260P221 | CXC260P2R21 | CXCT260P2R21 | CXC260P2X21 | CXCT260P2X21 | 13.2 | 6 | |
| | | | | 240 | CXC260P231 | CXCT260P231 | CXC260P2R31 | CXCT260P2R31 | CXC260P2X31 | CXCT260P2X31 | | | |
| | | | | 480 | CXC260P271 | CXCT260P271 | CXC260P2R71 | CXCT260P2R71 | CXC260P2X71 | CXCT260P2X71 | | | |
| | | | | 600 | CXC260P281 | CXCT260P281 | CXC260P2R81 | CXCT260P2R81 | CXC260P2X81 | CXCT260P2X81 | | | |
| | 8.0 | 32.5 | 826 | 208 | CXC280P221 | CXCT280P221 | CXC280P2R21 | CXCT280P2R21 | CXC280P2X21 | CXCT280P2X21 | 13.2 | 6 | |
| | | | | 240 | CXC280P231 | CXCT280P231 | CXC280P2R31 | CXCT280P2R31 | CXC280P2X31 | CXCT280P2X31 | | | |
| | | | | 480 | CXC280P271 | CXCT280P271 | CXC280P2R71 | CXCT280P2R71 | CXC280P2X71 | CXCT280P2X71 | | | |
| | | | | 600 | CXC280P281 | CXCT280P281 | CXC280P2R81 | CXCT280P2R81 | CXC280P2X81 | CXCT280P2X81 | | | |
| | 10.0 | 39.4 | 1001 | 208 | CXC2100P221 | CXCT2100P221 | CXC2100P2R21 | CXCT2100P2R21 | CXC2100P2X21 | CXCT2100P2X21 | 15.4 | 7 | |
| | | | | 240 | CXC2100P231 | CXCT2100P231 | CXC2100P2R31 | CXCT2100P2R31 | CXC2100P2X31 | CXCT2100P2X31 | | | |
| | | | | 480 | CXC2100P271 | CXCT2100P271 | CXC2100P2R71 | CXCT2100P2R71 | CXC2100P2X71 | CXCT2100P2X71 | | | |
| | | | | 600 | CXC2100P281 | CXCT2100P281 | CXC2100P2R81 | CXCT2100P2R81 | CXC2100P2X81 | CXCT2100P2X81 | | | |
| 12.0 | 47.2 | 1199 | 208 | CXC2120P221 | CXCT2120P221 | CXC2120P2R21 | CXCT2120P2R21 | CXC2120P2X21 | CXCT2120P2X21 | 15.4 | 7 | | |
| | | | 240 | CXC2120P231 | CXCT2120P231 | CXC2120P2R31 | CXCT2120P2R31 | CXC2120P2X31 | CXCT2120P2X31 | | | | |
| | | | 480 | CXC2120P271 | CXCT2120P271 | CXC2120P2R71 | CXCT2120P2R71 | CXC2120P2X71 | CXCT2120P2X71 | | | | |
| | | | 600 | CXC2120P281 | CXCT2120P281 | CXC2120P2R81 | CXCT2120P2R81 | CXC2120P2X81 | CXCT2120P2X81 | | | | |
| Incoloy® Sheath Stainless Plug 54 to 60 W/in ² (8.3 to 9.3 W/cm ²) | 1.5 | 7.9 | 201 | 120 | CXI215P211 | CXIT215P211 | CXI215P2R11 | CXIT215P2R11 | CXI215P2X11 | CXIT215P2X11 | 8.8 | 4 | |
| | | | | 208 | CXI215P221 | CXIT215P221 | CXI215P2R21 | CXIT215P2R21 | CXI215P2X21 | CXIT215P2X21 | | | |
| | | | | 240 | CXI215P231 | CXIT215P231 | CXI215P2R31 | CXIT215P2R31 | CXI215P2X31 | CXIT215P2X31 | | | |
| | | | | 480 | CXI215P271 | CXIT215P271 | CXI215P2R71 | CXIT215P2R71 | CXI215P2X71 | CXIT215P2X71 | | | |
| | | | | 600 | CXI215P281 | CXIT215P281 | CXI215P2R81 | CXIT215P2R81 | CXI215P2X81 | CXIT215P2X81 | | | |
| | 2.0 | 7.9 | 201 | 120 | CXI220P211 | CXIT220P211 | CXI220P2R11 | CXIT220P2R11 | CXI220P2X11 | CXIT220P2X11 | 8.8 | 4 | |
| | | | | 208 | CXI220P221 | CXIT220P221 | CXI220P2R21 | CXIT220P2R21 | CXI220P2X21 | CXIT220P2X21 | | | |
| | | | | 240 | CXI220P231 | CXIT220P231 | CXI220P2R31 | CXIT220P2R31 | CXI220P2X31 | CXIT220P2X31 | | | |
| | | | | 480 | CXI220P271 | CXIT220P271 | CXI220P2R71 | CXIT220P2R71 | CXI220P2X71 | CXIT220P2X71 | | | |
| | | | | 600 | CXI220P281 | CXIT220P281 | CXI220P2R81 | CXIT220P2R81 | CXI220P2X81 | CXIT220P2X81 | | | |
| | 3.0 | 11.8 | 300 | 120 | CXI230P211 | CXIT230P211 | CXI230P2R11 | CXIT230P2R11 | CXI230P2X11 | CXIT230P2X11 | 11 | 5 | |
| | | | | 208 | CXI230P221 | CXIT230P221 | CXI230P2R21 | CXIT230P2R21 | CXI230P2X21 | CXIT230P2X21 | | | |
| | | | | 240 | CXI230P231 | CXIT230P231 | CXI230P2R31 | CXIT230P2R31 | CXI230P2X31 | CXIT230P2X31 | | | |
| | | | | 480 | CXI230P271 | CXIT230P271 | CXI230P2R71 | CXIT230P2R71 | CXI230P2X71 | CXIT230P2X71 | | | |
| | | | | 600 | CXI230P281 | CXIT230P281 | CXI230P2R81 | CXIT230P2R81 | CXI230P2X81 | CXIT230P2X81 | | | |
| | 4.0 | 17.7 | 450 | 208 | CXI240P221 | CXIT240P221 | CXI240P2R21 | CXIT240P2R21 | CXI240P2X21 | CXIT240P2X21 | 11 | 5 | |
| | | | | 240 | CXI240P231 | CXIT240P231 | CXI240P2R31 | CXIT240P2R31 | CXI240P2X31 | CXIT240P2X31 | | | |
| | | | | 480 | CXI240P271 | CXIT240P271 | CXI240P2R71 | CXIT240P2R71 | CXI240P2X71 | CXIT240P2X71 | | | |
| | | | | 600 | CXI240P281 | CXIT240P281 | CXI240P2R81 | CXIT240P2R81 | CXI240P2X81 | CXIT240P2X81 | | | |
| | 5.0 | 21.7 | 551 | 208 | CXI250P221 | CXIT250P221 | CXI250P2R21 | CXIT250P2R21 | CXI250P2X21 | CXIT250P2X21 | 13.2 | 6 | |
| 240 | | | | CXI250P231 | CXIT250P231 | CXI250P2R31 | CXIT250P2R31 | CXI250P2X31 | CXIT250P2X31 | | | | |
| 480 | | | | CXI250P271 | CXIT250P271 | CXI250P2R71 | CXIT250P2R71 | CXI250P2X71 | CXIT250P2X71 | | | | |
| 600 | | | | CXI250P281 | CXIT250P281 | CXI250P2R81 | CXIT250P2R81 | CXI250P2X81 | CXIT250P2X81 | | | | |

Table 3 – Screwplug Heaters (Two Elements) - 2" NPT (Cont'd)

| | kW | Immersion Length 'B' | | Standard Voltages 1 Phase Only | General Purpose Terminal Box | | NEMA 4 Terminal Box | | Explosion-Proof Terminal Box | | Net Weight | |
|--|---|----------------------|------|--------------------------------|------------------------------|---|---------------------|---|------------------------------|---|----------------|----|
| | | in | mm | | Without Thermostat | With Thermostat 50°F to 250°F (10°C to 120°C) | Without Thermostat | With Thermostat 50°F to 250°F (10°C to 120°C) | Without Thermostat | With Thermostat 50°F to 250°F (10°C to 120°C) | lbs | kg |
| | | | | | | | | | | | | |
| Incoloy® Sheath Stainless Plug 54 to 60 W/in ² (8.3 to 9.3 W/cm ²) | 6.0 | 25.6 | 650 | 208 | CXI260P221 | CXIT260P221 | CXI260P2R21 | CXIT260P2R21 | CXI260P2X21 | CXIT260P2X21 | 13.2 | 6 |
| | | | | 240 | CXI260P231 | CXIT260P231 | CXI260P2R31 | CXIT260P2R31 | CXI260P2X31 | CXIT260P2X31 | | |
| | | | | 480 | CXI260P271 | CXIT260P271 | CXI260P2R71 | CXIT260P2R71 | CXI260P2X71 | CXIT260P2X71 | | |
| | | | | 600 | CXI260P281 | CXIT260P281 | CXI260P2R81 | CXIT260P2R81 | CXI260P2X81 | CXIT260P2X81 | | |
| | 8.0 | 32.5 | 826 | 208 | CXI280P221 | CXIT280P221 | CXI280P2R21 | CXIT280P2R21 | CXI280P2X21 | CXIT280P2X21 | 13.2 | 6 |
| | | | | 240 | CXI280P231 | CXIT280P231 | CXI280P2R31 | CXIT280P2R31 | CXI280P2X31 | CXIT280P2X31 | | |
| | | | | 480 | CXI280P271 | CXIT280P271 | CXI280P2R71 | CXIT280P2R71 | CXI280P2X71 | CXIT280P2X71 | | |
| | 10.0 | 39.4 | 1001 | 208 | CXI2100P221 | CXIT2100P221 | CXI2100P2R21 | CXIT2100P2R21 | CXI2100P2X21 | CXIT2100P2X21 | 15.4 | 7 |
| | | | | 240 | CXI2100P231 | CXIT2100P231 | CXI2100P2R31 | CXIT2100P2R31 | CXI2100P2X31 | CXIT2100P2X31 | | |
| | | | | 480 | CXI2100P271 | CXIT2100P271 | CXI2100P2R71 | CXIT2100P2R71 | CXI2100P2X71 | CXIT2100P2X71 | | |
| | | | | 600 | CXI2100P281 | CXIT2100P281 | CXI2100P2R81 | CXIT2100P2R81 | CXI2100P2X81 | CXIT2100P2X81 | | |
| | 12.0 | 47.2 | 1199 | 208 | CXI2120P221 | CXIT2120P221 | CXI2120P2R21 | CXIT2120P2R21 | CXI2120P2X21 | CXIT2120P2X21 | 15.4 | 7 |
| | | | | 240 | CXI2120P231 | CXIT2120P231 | CXI2120P2R31 | CXIT2120P2R31 | CXI2120P2X31 | CXIT2120P2X31 | | |
| | | | | 480 | CXI2120P271 | CXIT2120P271 | CXI2120P2R71 | CXIT2120P2R71 | CXI2120P2X71 | CXIT2120P2X71 | | |
| | | | | 600 | CXI2120P281 | CXIT2120P281 | CXI2120P2R81 | CXIT2120P2R81 | CXI2120P2X81 | CXIT2120P2X81 | | |
| | Incoloy® Sheath Steel Plug 23 W/in ² (3.6 W/cm ²) | 1.5 | 14 | 356 | 120 | CXF215P21411 | CXFT215P21411 | CXF215P214R11 | CXFT215P214R11 | CXF215P214X11 | CXFT215P214X11 | 11 |
| 208 | | | | | CXF215P21421 | CXFT215P21421 | CXF215P214R21 | CXFT215P214R21 | CXF215P214X21 | CXFT215P214X21 | | |
| 240 | | | | | CXF215P21431 | CXFT215P21431 | CXF215P214R31 | CXFT215P214R31 | CXF215P214X31 | CXFT215P214X31 | | |
| 480 | | | | | CXF215P21471 | CXFT215P21471 | CXF215P214R71 | CXFT215P214R71 | CXF215P214X71 | CXFT215P214X71 | | |
| 600 | | | | | CXF215P21481 | CXFT215P21481 | CXF215P214R81 | CXFT215P214R81 | CXF215P214X81 | CXFT215P214X81 | | |
| 2.0 | | 18 | 457 | 120 | CXF220P21811 | CXFT220P21811 | CXF220P218R11 | CXFT220P218R11 | CXF220P218X11 | CXFT220P218X11 | 11 | 5 |
| | | | | 208 | CXF220P21821 | CXFT220P21821 | CXF220P218R21 | CXFT220P218R21 | CXF220P218X21 | CXFT220P218X21 | | |
| | | | | 240 | CXF220P21831 | CXFT220P21831 | CXF220P218R31 | CXFT220P218R31 | CXF220P218X31 | CXFT220P218X31 | | |
| | | | | 480 | CXF220P21871 | CXFT220P21871 | CXF220P218R71 | CXFT220P218R71 | CXF220P218X71 | CXFT220P218X71 | | |
| | | | | 600 | CXF220P21881 | CXFT220P21881 | CXF220P218R81 | CXFT220P218R81 | CXF220P218X81 | CXFT220P218X81 | | |
| 3.0 | | 26 | 660 | 120 | CXF230P22611 | CXFT230P22611 | CXF230P226R11 | CXFT230P226R11 | CXF230P226X11 | CXFT230P226X11 | 13.2 | 6 |
| | | | | 208 | CXF230P22621 | CXFT230P22621 | CXF230P226R21 | CXFT230P226R21 | CXF230P226X21 | CXFT230P226X21 | | |
| | | | | 240 | CXF230P22631 | CXFT230P22631 | CXF230P226R31 | CXFT230P226R31 | CXF230P226X31 | CXFT230P226X31 | | |
| | | | | 480 | CXF230P22671 | CXFT230P22671 | CXF230P226R71 | CXFT230P226R71 | CXF230P226X71 | CXFT230P226X71 | | |
| | | | | 600 | CXF230P22681 | CXFT230P22681 | CXF230P226R81 | CXFT230P226R81 | CXF230P226X81 | CXFT230P226X81 | | |
| 4.0 | | 34 | 864 | 208 | CXF240P23421 | CXFT240P23421 | CXF240P234R21 | CXFT240P234R21 | CXF240P234X21 | CXFT240P234X21 | 13.2 | 6 |
| | | | | 240 | CXF240P23431 | CXFT240P23431 | CXF240P234R31 | CXFT240P234R31 | CXF240P234X31 | CXFT240P234X31 | | |
| | | | | 480 | CXF240P23471 | CXFT240P23471 | CXF240P234R71 | CXFT240P234R71 | CXF240P234X71 | CXFT240P234X71 | | |
| | | | | 600 | CXF240P23481 | CXFT240P23481 | CXF240P234R81 | CXFT240P234R81 | CXF240P234X81 | CXFT240P234X81 | | |
| 5.0 | | 42 | 1067 | 208 | CXF250P24221 | CXFT250P24221 | CXF250P242R21 | CXFT250P242R21 | CXF250P242X21 | CXFT250P242X21 | 15.4 | 7 |
| | | | | 240 | CXF250P24231 | CXFT250P24231 | CXF250P242R31 | CXFT250P242R31 | CXF250P242X31 | CXFT250P242X31 | | |
| | | | | 480 | CXF250P24271 | CXFT250P24271 | CXF250P242R71 | CXFT250P242R71 | CXF250P242X71 | CXFT250P242X71 | | |
| | | | | 600 | CXF250P24281 | CXFT250P24281 | CXF250P242R81 | CXFT250P242R81 | CXF250P242X81 | CXFT250P242X81 | | |
| 6.0 | | 50 | 1270 | 208 | CXF260P25021 | CXFT260P25021 | CXF260P250R21 | CXFT260P250R21 | CXF260P250X21 | CXFT260P250X21 | 15.4 | 7 |
| | 240 | | | CXF260P25031 | CXFT260P25031 | CXF260P250R31 | CXFT260P250R31 | CXF260P250X31 | CXFT260P250X31 | | | |
| | 480 | | | CXF260P25071 | CXFT260P25071 | CXF260P250R71 | CXFT260P250R71 | CXF260P250X71 | CXFT260P250X71 | | | |
| | 600 | | | CXF260P25081 | CXFT260P25081 | CXF260P250R81 | CXFT260P250R81 | CXF260P250X81 | CXFT260P250X81 | | | |

Table 3 – Screwplug Heaters (Two Elements) - 2" NPT (Cont'd)

| | kW | Immersion Length 'B' | | Standard Voltages 1 Phase Only | General Purpose Terminal Box | | NEMA 4 Terminal Box | | Explosion-Proof Terminal Box | | Net Weight | |
|---|-----|----------------------|------|--------------------------------|------------------------------|---|---------------------|---|------------------------------|---|------------|----|
| | | in | mm | | Without Thermostat | With Thermostat 50°F to 250°F (10°C to 120°C) | Without Thermostat | With Thermostat 50°F to 250°F (10°C to 120°C) | Without Thermostat | With Thermostat 50°F to 250°F (10°C to 120°C) | lbs | kg |
| | | | | | | | | | | | | |
| Incoloy® Sheath Stainless Steel Plug 23 W/in ² (3.6 W/cm ²) | 1.5 | 14 | 356 | 120 | CXI215P21411 | CXIT215P21411 | CXI215P214R11 | CXIT215P214R11 | CXI215P214X11 | CXIT215P214X11 | 11 | 5 |
| | | | | 208 | CXI215P21421 | CXIT215P21421 | CXI215P214R21 | CXIT215P214R21 | CXI215P214X21 | CXIT215P214X21 | | |
| | | | | 240 | CXI215P21431 | CXIT215P21431 | CXI215P214R31 | CXIT215P214R31 | CXI215P214X31 | CXIT215P214X31 | | |
| | | | | 480 | CXI215P21471 | CXIT215P21471 | CXI215P214R71 | CXIT215P214R71 | CXI215P214X71 | CXIT215P214X71 | | |
| | | | | 600 | CXI215P21481 | CXIT215P21481 | CXI215P214R81 | CXIT215P214R81 | CXI215P214X81 | CXIT215P214X81 | | |
| | 2.0 | 18 | 457 | 120 | CXI220P21811 | CXIT220P21811 | CXI220P218R11 | CXIT220P218R11 | CXI220P218X11 | CXIT220P218X11 | 11 | 5 |
| | | | | 208 | CXI220P21821 | CXIT220P21821 | CXI220P218R21 | CXIT220P218R21 | CXI220P218X21 | CXIT220P218X21 | | |
| | | | | 240 | CXI220P21831 | CXIT220P21831 | CXI220P218R31 | CXIT220P218R31 | CXI220P218X31 | CXIT220P218X31 | | |
| | | | | 480 | CXI220P21871 | CXIT220P21871 | CXI220P218R71 | CXIT220P218R71 | CXI220P218X71 | CXIT220P218X71 | | |
| | | | | 600 | CXI220P21881 | CXIT220P21881 | CXI220P218R81 | CXIT220P218R81 | CXI220P218X81 | CXIT220P218X81 | | |
| | 3.0 | 26 | 660 | 120 | CXI230P22611 | CXIT230P22611 | CXI230P226R11 | CXIT230P226R11 | CXI230P226X11 | CXIT230P226X11 | 13.2 | 6 |
| | | | | 208 | CXI230P22621 | CXIT230P22621 | CXI230P226R21 | CXIT230P226R21 | CXI230P226X21 | CXIT230P226X21 | | |
| | | | | 240 | CXI230P22631 | CXIT230P22631 | CXI230P226R31 | CXIT230P226R31 | CXI230P226X31 | CXIT230P226X31 | | |
| | | | | 480 | CXI230P22671 | CXIT230P22671 | CXI230P226R71 | CXIT230P226R71 | CXI230P226X71 | CXIT230P226X71 | | |
| | | | | 600 | CXI230P22681 | CXIT230P22681 | CXI230P226R81 | CXIT230P226R81 | CXI230P226X81 | CXIT230P226X81 | | |
| | 4.0 | 34 | 864 | 208 | CXI240P23421 | CXIT240P23421 | CXI240P234R21 | CXIT240P234R21 | CXI240P234X21 | CXIT240P234X21 | 13.2 | 6 |
| | | | | 240 | CXI240P23431 | CXIT240P23431 | CXI240P234R31 | CXIT240P234R31 | CXI240P234X31 | CXIT240P234X31 | | |
| | | | | 480 | CXI240P23471 | CXIT240P23471 | CXI240P234R71 | CXIT240P234R71 | CXI240P234X71 | CXIT240P234X71 | | |
| | | | | 600 | CXI240P23481 | CXIT240P23481 | CXI240P234R81 | CXIT240P234R81 | CXI240P234X81 | CXIT240P234X81 | | |
| | | | | | | | | | | | | |
| 5.0 | 42 | 1067 | 208 | CXI250P24221 | CXIT250P24221 | CXI250P242R21 | CXIT250P242R21 | CXI250P242X21 | CXIT250P242X21 | 15.4 | 7 | |
| | | | 240 | CXI250P24231 | CXIT250P24231 | CXI250P242R31 | CXIT250P242R31 | CXI250P242X31 | CXIT250P242X31 | | | |
| | | | 480 | CXI250P24271 | CXIT250P24271 | CXI250P242R71 | CXIT250P242R71 | CXI250P242X71 | CXIT250P242X71 | | | |
| | | | 600 | CXI250P24281 | CXIT250P24281 | CXI250P242R81 | CXIT250P242R81 | CXI250P242X81 | CXIT250P242X81 | | | |
| | | | | | | | | | | | | |
| 6.0 | 50 | 1270 | 208 | CXI260P25021 | CXIT260P25021 | CXI260P250R21 | CXIT260P250R21 | CXI260P250X21 | CXIT260P250X21 | 15.4 | 7 | |
| | | | 240 | CXI260P25031 | CXIT260P25031 | CXI260P250R31 | CXIT260P250R31 | CXI260P250X31 | CXIT260P250X31 | | | |
| | | | 480 | CXI260P25071 | CXIT260P25071 | CXI260P250R71 | CXIT260P250R71 | CXI260P250X71 | CXIT260P250X71 | | | |
| | | | 600 | CXI260P25081 | CXIT260P25081 | CXI260P250R81 | CXIT260P250R81 | CXI260P250X81 | CXIT260P250X81 | | | |
| | | | | | | | | | | | | |
| Incoloy® Sheath Steel Plug 15 W/in ² (2.3 W/cm ²) | 1.0 | 17.7 | 450 | 120 | CXF210P211 | CXFT210P211 | CXF210P2R11 | CXFT210P2R11 | CXF210P2X11 | CXFT210P2X11 | 11 | 5 |
| | | | | 208 | CXF210P221 | CXFT210P221 | CXF210P2R21 | CXFT210P2R21 | CXF210P2X21 | CXFT210P2X21 | | |
| | | | | 240 | CXF210P231 | CXFT210P231 | CXF210P2R31 | CXFT210P2R31 | CXF210P2X31 | CXFT210P2X31 | | |
| | | | | 480 | CXF210P271 | CXFT210P271 | CXF210P2R71 | CXFT210P2R71 | CXF210P2X71 | CXFT210P2X71 | | |
| | | | | 600 | CXF210P281 | CXFT210P281 | CXF210P2R81 | CXFT210P2R81 | CXF210P2X81 | CXFT210P2X81 | | |
| | 1.5 | 25.6 | 650 | 120 | CXF215P22511 | CXFT215P22511 | CXF215P225R11 | CXFT215P225R11 | CXF215P225X11 | CXFT215P225X11 | 11 | 5 |
| | | | | 208 | CXF215P22521 | CXFT215P22521 | CXF215P225R21 | CXFT215P225R21 | CXF215P225X21 | CXFT215P225X21 | | |
| | | | | 240 | CXF215P22531 | CXFT215P22531 | CXF215P225R31 | CXFT215P225R31 | CXF215P225X31 | CXFT215P225X31 | | |
| | | | | 480 | CXF215P22571 | CXFT215P22571 | CXF215P225R71 | CXFT215P225R71 | CXF215P225X71 | CXFT215P225X71 | | |
| | | | | 600 | CXF215P22581 | CXFT215P22581 | CXF215P225R81 | CXFT215P225R81 | CXF215P225X81 | CXFT215P225X81 | | |
| | 2.0 | 32.5 | 826 | 120 | CXF220P23211 | CXFT220P23211 | CXF220P232R11 | CXFT220P232R11 | CXF220P232X11 | CXFT220P232X11 | 11 | 5 |
| | | | | 208 | CXF220P23221 | CXFT220P23221 | CXF220P232R21 | CXFT220P232R21 | CXF220P232X21 | CXFT220P232X21 | | |
| | | | | 240 | CXF220P23231 | CXFT220P23231 | CXF220P232R31 | CXFT220P232R31 | CXF220P232X31 | CXFT220P232X31 | | |
| | | | | 480 | CXF220P23271 | CXFT220P23271 | CXF220P232R71 | CXFT220P232R71 | CXF220P232X71 | CXFT220P232X71 | | |
| | | | | 600 | CXF220P23281 | CXFT220P23281 | CXF220P232R81 | CXFT220P232R81 | CXF220P232X81 | CXFT220P232X81 | | |
| | 3.0 | 39.4 | 1001 | 120 | CXF230P23911 | CXFT230P23911 | CXF230P239R11 | CXFT230P239R11 | CXF230P239X11 | CXFT230P239X11 | 13.2 | 6 |
| | | | | 208 | CXF230P23921 | CXFT230P23921 | CXF230P239R21 | CXFT230P239R21 | CXF230P239X21 | CXFT230P239X21 | | |
| | | | | 240 | CXF230P23931 | CXFT230P23931 | CXF230P239R31 | CXFT230P239R31 | CXF230P239X31 | CXFT230P239X31 | | |
| | | | | 480 | CXF230P23971 | CXFT230P23971 | CXF230P239R71 | CXFT230P239R71 | CXF230P239X71 | CXFT230P239X71 | | |
| | | | | 600 | CXF230P23981 | CXFT230P23981 | CXF230P239R81 | CXFT230P239R81 | CXF230P239X81 | CXFT230P239X81 | | |

Table 3 – Screwplug Heaters (Two Elements) - 2" NPT (Cont'd)

| | kW | Immersion Length 'B' | | Standard Voltages 1 Phase Only | General Purpose Terminal Box | | NEMA 4 Terminal Box | | Explosion-Proof Terminal Box | | Net Weight | |
|---|-----|----------------------|------|--------------------------------|------------------------------|---|---------------------|---|------------------------------|---|------------|----|
| | | in | mm | | Without Thermostat | With Thermostat 50°F to 250°F (10°C to 120°C) | Without Thermostat | With Thermostat 50°F to 250°F (10°C to 120°C) | Without Thermostat | With Thermostat 50°F to 250°F (10°C to 120°C) | lbs | kg |
| | | | | | | | | | | | | |
| Incoloy® Sheath Stainless Plug 15 W/in ² (2.3 W/cm ²) | 1.0 | 17.7 | 450 | 120 | CXI210P211 | CXIT210P211 | CXI210P2R11 | CXIT210P2R11 | CXI210P2X11 | CXIT210P2X11 | 8.8 | 4 |
| | | | | 208 | CXI210P221 | CXIT210P221 | CXI210P2R21 | CXIT210P2R21 | CXI210P2X21 | CXIT210P2X21 | | |
| | | | | 240 | CXI210P231 | CXIT210P231 | CXI210P2R31 | CXIT210P2R31 | CXI210P2X31 | CXIT210P2X31 | | |
| | | | | 480 | CXI210P271 | CXIT210P271 | CXI210P2R71 | CXIT210P2R71 | CXI210P2X71 | CXIT210P2X71 | | |
| | | | | 600 | CXI210P281 | CXIT210P281 | CXI210P2R81 | CXIT210P2R81 | CXI210P2X81 | CXIT210P2X81 | | |
| | 1.5 | 25.6 | 650 | 120 | CXI215P22511 | CXIT215P22511 | CXI215P225R11 | CXIT215P225R11 | CXI215P225X11 | CXIT215P225X11 | 8.8 | 4 |
| | | | | 208 | CXI215P22521 | CXIT215P22521 | CXI215P225R21 | CXIT215P225R21 | CXI215P225X21 | CXIT215P225X21 | | |
| | | | | 240 | CXI215P22531 | CXIT215P22531 | CXI215P225R31 | CXIT215P225R31 | CXI215P225X31 | CXIT215P225X31 | | |
| | | | | 480 | CXI215P22571 | CXIT215P22571 | CXI215P225R71 | CXIT215P225R71 | CXI215P225X71 | CXIT215P225X71 | | |
| | | | | 600 | CXI215P22581 | CXIT215P22581 | CXI215P225R81 | CXIT215P225R81 | CXI215P225X81 | CXIT215P225X81 | | |
| | 2.0 | 32.5 | 826 | 120 | CXI220P23211 | CXIT220P23211 | CXI220P232R11 | CXIT220P232R11 | CXI220P232X11 | CXIT220P232X11 | 8.8 | 4 |
| | | | | 208 | CXI220P23221 | CXIT220P23221 | CXI220P232R21 | CXIT220P232R21 | CXI220P232X21 | CXIT220P232X21 | | |
| | | | | 240 | CXI220P23231 | CXIT220P23231 | CXI220P232R31 | CXIT220P232R31 | CXI220P232X31 | CXIT220P232X31 | | |
| | | | | 480 | CXI220P23271 | CXIT220P23271 | CXI220P232R71 | CXIT220P232R71 | CXI220P232X71 | CXIT220P232X71 | | |
| | | | | 600 | CXI220P23281 | CXIT220P23281 | CXI220P232R81 | CXIT220P232R81 | CXI220P232X81 | CXIT220P232X81 | | |
| | 3.0 | 39.4 | 1001 | 120 | CXI230P23911 | CXIT230P23911 | CXI230P239R11 | CXIT230P239R11 | CXI230P239X11 | CXIT230P239X11 | 8.8 | 4 |
| | | | | 208 | CXI230P23921 | CXIT230P23921 | CXI230P239R21 | CXIT230P239R21 | CXI230P239X21 | CXIT230P239X21 | | |
| | | | | 240 | CXI230P23931 | CXIT230P23931 | CXI230P239R31 | CXIT230P239R31 | CXI230P239X31 | CXIT230P239X31 | | |
| | | | | 480 | CXI230P23971 | CXIT230P23971 | CXI230P239R71 | CXIT230P239R71 | CXI230P239X71 | CXIT230P239X71 | | |
| | | | | 600 | CXI230P23981 | CXIT230P23981 | CXI230P239R81 | CXIT230P239R81 | CXI230P239X81 | CXIT230P239X81 | | |

Table 4 – Screwplug Heaters (Three Element) - 2" NPT

| | kW | Immersion Length 'B' | | Phase | Standard Voltage | General Purpose Terminal Box | | NEMA 4 Terminal Box | | Explosion-Proof Terminal Box | | Net Weight | | | | | | |
|--|-----|----------------------|------------|-------|------------------|------------------------------|---|---------------------|---|------------------------------|---|--------------|-------------|--------------|-------------|--------------|------|---|
| | | in | mm | | | Without Thermostat | With Thermostat 50°F to 250°F (10°C to 120°C) | Without Thermostat | With Thermostat 50°F to 250°F (10°C to 120°C) | Without Thermostat | With Thermostat 50°F to 250°F (10°C to 120°C) | lbs | kg | | | | | |
| | | | | | | | | | | | | | | | | | | |
| Copper Sheath Brass Plug 54 to 60 W/in ² (8.3 to 8.9 W/cm ²) | 3.0 | 7.9 | 201 | 1 | 120 | CXC330P211 | CXCT330P211 | CXC330P2R11 | CXCT330P2R11 | CXC330P2X11 | CXCT330P2X11 | 11 | 5 | | | | | |
| | | | | 1 | 208 | CXC330P221 | CXCT330P221 | CXC330P2R21 | CXCT330P2R21 | CXC330P2X21 | CXCT330P2X21 | | | | | | | |
| | | | | 3 | 208 | CXC330P223 | CXCT330P223 | CXC330P2R23 | CXCT330P2R23 | CXC330P2X23 | CXCT330P2X23 | | | | | | | |
| | | | | 1 | 240 | CXC330P231 | CXCT330P231 | CXC330P2R31 | CXCT330P2R31 | CXC330P2X31 | CXCT330P2X31 | | | | | | | |
| | | | | 1 | 480 | CXC330P271 | CXCT330P271 | CXC330P2R71 | CXCT330P2R71 | CXC330P2X71 | CXCT330P2X71 | | | | | | | |
| | | | | 3 | 480 | CXC330P273 | CXCT330P273 | CXC330P2R73 | CXCT330P2R73 | CXC330P2X73 | CXCT330P2X73 | | | | | | | |
| | | | | 1 | 600 | CXC330P281 | CXCT330P281 | CXC330P2R81 | CXCT330P2R81 | CXC330P2X81 | CXCT330P2X81 | | | | | | | |
| | | | | 3 | 600 | CXC330P283 | CXCT330P283 | CXC330P2R83 | CXCT330P2R83 | CXC330P2X83 | CXCT330P2X83 | | | | | | | |
| | | | | 4.5 | 11.8 | 300 | 1 | 208 | CXC345P221 | CXCT345P221 | CXC345P2R21 | | | CXCT345P2R21 | CXC345P2X21 | CXCT345P2X21 | 13.2 | 6 |
| | | | | | | | 3 | 208 | CXC345P223 | CXCT345P223 | CXC345P2R23 | | | CXCT345P2R23 | CXC345P2X23 | CXCT345P2X23 | | |
| | 1 | 240 | CXC345P231 | | | | CXCT345P231 | CXC345P2R31 | CXCT345P2R31 | CXC345P2X31 | CXCT345P2X31 | | | | | | | |
| | 1 | 480 | CXC345P271 | | | | CXCT345P271 | CXC345P2R71 | CXCT345P2R71 | CXC345P2X71 | CXCT345P2X71 | | | | | | | |
| | 3 | 480 | CXC345P273 | | | | CXCT345P273 | CXC345P2R73 | CXCT345P2R73 | CXC345P2X73 | CXCT345P2X73 | | | | | | | |
| | 1 | 600 | CXC345P281 | | | | CXCT345P281 | CXC345P2R81 | CXCT345P2R81 | CXC345P2X81 | CXCT345P2X81 | | | | | | | |
| | 3 | 600 | CXC345P283 | | | | CXCT345P283 | CXC345P2R83 | CXCT345P2R83 | CXC345P2X83 | CXCT345P2X83 | | | | | | | |
| | 6.0 | 17.7 | 450 | | | | 1 | 208 | CXC360P221 | CXCT360P221 | CXC360P2R21 | CXCT360P2R21 | CXC360P2X21 | CXCT360P2X21 | 13.2 | 6 | | |
| | | | | | | | 3 | 208 | CXC360P223 | CXCT360P223 | CXC360P2R23 | CXCT360P2R23 | CXC360P2X23 | CXCT360P2X23 | | | | |
| | | | | | | | 1 | 240 | CXC360P231 | CXCT360P231 | CXC360P2R31 | CXCT360P2R31 | CXC360P2X31 | CXCT360P2X31 | | | | |
| | | | | 1 | 480 | CXC360P271 | CXCT360P271 | CXC360P2R71 | CXCT360P2R71 | CXC360P2X71 | CXCT360P2X71 | | | | | | | |
| | | | | 3 | 480 | CXC360P273 | CXCT360P273 | CXC360P2R73 | CXCT360P2R73 | CXC360P2X73 | CXCT360P2X73 | | | | | | | |
| 1 | | | | 600 | CXC360P281 | CXCT360P281 | CXC360P2R81 | CXCT360P2R81 | CXC360P2X81 | CXCT360P2X81 | | | | | | | | |
| 3 | | | | 600 | CXC360P283 | CXCT360P283 | CXC360P2R83 | CXCT360P2R83 | CXC360P2X83 | CXCT360P2X83 | | | | | | | | |

Table 4 – Screwplug Heaters (Three Element) - 2" NPT (Cont'd)

| | kW | Immersion Length 'B' | | Phase | Standard Voltage | General Purpose Terminal Box | | NEMA 4 Terminal Box | | Explosion-Proof Terminal Box | | Net Weight | |
|--|------|----------------------|-----|-------|------------------|------------------------------|---|---------------------|---|------------------------------|---|------------|----|
| | | in | mm | | | Without Thermostat | With Thermostat 50°F to 250°F (10°C to 120°C) | Without Thermostat | With Thermostat 50°F to 250°F (10°C to 120°C) | Without Thermostat | With Thermostat 50°F to 250°F (10°C to 120°C) | lbs | kg |
| | | | | | | | | | | | | | |
| Copper Sheath Brass Plug 54 to 60 W/in ² (8.3 to 8.9 W/cm ²) | 7.5 | 21.7 | 551 | 1 | 208 | CXC375P221 | CXCT375P221 | CXC375P2R21 | CXCT375P2R21 | CXC375P2X21 | CXCT375P2X21 | 13.2 | 6 |
| | | | | 3 | 208 | CXC375P223 | CXCT375P223 | CXC375P2R23 | CXCT375P2R23 | CXC375P2X23 | CXCT375P2X23 | | |
| | | | | 1 | 240 | CXC375P231 | CXCT375P231 | CXC375P2R31 | CXCT375P2R31 | CXC375P2X31 | CXCT375P2X31 | | |
| | | | | 1 | 480 | CXC375P271 | CXCT375P271 | CXC375P2R71 | CXCT375P2R71 | CXC375P2X71 | CXCT375P2X71 | | |
| | | | | 3 | 480 | CXC375P273 | CXCT375P273 | CXC375P2R73 | CXCT375P2R73 | CXC375P2X73 | CXCT375P2X73 | | |
| | | | | 1 | 600 | CXC375P281 | CXCT375P281 | CXC375P2R81 | CXCT375P2R81 | CXC375P2X81 | CXCT375P2X81 | | |
| | 9.0 | 25.6 | 650 | 3 | 208 | CXC390P223 | CXCT390P223 | CXC390P2R23 | CXCT390P2R23 | CXC390P2X23 | CXCT390P2X23 | 15.4 | 7 |
| | | | | 1 | 240 | CXC390P231 | CXCT390P231 | CXC390P2R31 | CXCT390P2R31 | CXC390P2X31 | CXCT390P2X31 | | |
| | | | | 1 | 480 | CXC390P271 | CXCT390P271 | CXC390P2R71 | CXCT390P2R71 | CXC390P2X71 | CXCT390P2X71 | | |
| | | | | 3 | 480 | CXC390P273 | CXCT390P273 | CXC390P2R73 | CXCT390P2R73 | CXC390P2X73 | CXCT390P2X73 | | |
| | | | | 1 | 600 | CXC390P281 | CXCT390P281 | CXC390P2R81 | CXCT390P2R81 | CXC390P2X81 | CXCT390P2X81 | | |
| | 12.0 | 32.5 | 826 | 3 | 208 | CXC3120P223 | CXCT3120P223 | CXC3120P2R23 | CXCT3120P2R23 | CXC3120P2X23 | CXCT3120P2X23 | 15.4 | 7 |
| | | | | 1 | 480 | CXC3120P271 | CXCT3120P271 | CXC3120P2R71 | CXCT3120P2R71 | CXC3120P2X71 | CXCT3120P2X71 | | |
| | | | | 3 | 480 | CXC3120P273 | CXCT3120P273 | CXC3120P2R73 | CXCT3120P2R73 | CXC3120P2X73 | CXCT3120P2X73 | | |
| | | | | 1 | 600 | CXC3120P281 | CXCT3120P281 | CXC3120P2R81 | CXCT3120P2R81 | CXC3120P2X81 | CXCT3120P2X81 | | |
| Incoloy® Sheath Steel Plug 23 W/in ² (3.6 W/cm ²) | 3.0 | 17.7 | 450 | 1 | 120 | CXF330P211 | CXFT330P211 | CXF330P2R11 | CXFT330P2R11 | CXF330P2X11 | CXFT330P2X11 | 11 | 5 |
| | | | | 1 | 208 | CXF330P221 | CXFT330P221 | CXF330P2R21 | CXFT330P2R21 | CXF330P2X21 | CXFT330P2X21 | | |
| | | | | 3 | 208 | CXF330P223 | CXFT330P223 | CXF330P2R23 | CXFT330P2R23 | CXF330P2X23 | CXFT330P2X23 | | |
| | | | | 1 | 240 | CXF330P231 | CXFT330P231 | CXF330P2R31 | CXFT330P2R31 | CXF330P2X31 | CXFT330P2X31 | | |
| | | | | 1 | 480 | CXF330P271 | CXFT330P271 | CXF330P2R71 | CXFT330P2R71 | CXF330P2X71 | CXFT330P2X71 | | |
| | | | | 3 | 480 | CXF330P273 | CXFT330P273 | CXF330P2R73 | CXFT330P2R73 | CXF330P2X73 | CXFT330P2X73 | | |
| | | | | 1 | 600 | CXF330P281 | CXFT330P281 | CXF330P2R81 | CXFT330P2R81 | CXF330P2X81 | CXFT330P2X81 | | |
| | | | | 3 | 600 | CXF330P283 | CXFT330P283 | CXF330P2R83 | CXFT330P2R83 | CXF330P2X83 | CXFT330P2X83 | | |
| | 6.0 | 34 | 864 | 1 | 208 | CXF360P23421 | CXFT360P23421 | CXF360P234R21 | CXFT360P234R21 | CXF360P234X21 | CXFT360P234X21 | 13.2 | 6 |
| | | | | 3 | 208 | CXF360P23423 | CXFT360P23423 | CXF360P234R23 | CXFT360P234R23 | CXF360P234X23 | CXFT360P234X23 | | |
| | | | | 1 | 240 | CXF360P23431 | CXFT360P23431 | CXF360P234R31 | CXFT360P234R31 | CXF360P234X31 | CXFT360P234X31 | | |
| | | | | 1 | 480 | CXF360P23471 | CXFT360P23471 | CXF360P234R71 | CXFT360P234R71 | CXF360P234X71 | CXFT360P234X71 | | |
| | | | | 3 | 480 | CXF360P23473 | CXFT360P23473 | CXF360P234R73 | CXFT360P234R73 | CXF360P234X73 | CXFT360P234X73 | | |
| | | | | 1 | 600 | CXF360P23481 | CXFT360P23481 | CXF360P234R81 | CXFT360P234R81 | CXF360P234X81 | CXFT360P234X81 | | |
| | | | | 3 | 600 | CXF360P23483 | CXFT360P23483 | CXF360P234R83 | CXFT360P234R83 | CXF360P234X83 | CXFT360P234X83 | | |
| 9.0 | 50 | 1270 | 3 | 208 | CXF390P25023 | CXFT390P25023 | CXF390P250R23 | CXFT390P250R23 | CXF390P250X23 | CXFT390P250X23 | 15.4 | 7 | |
| | | | 1 | 240 | CXF390P25031 | CXFT390P25031 | CXF390P250R31 | CXFT390P250R31 | CXF390P250X31 | CXFT390P250X31 | | | |
| | | | 1 | 480 | CXF390P25071 | CXFT390P25071 | CXF390P250R71 | CXFT390P250R71 | CXF390P250X71 | CXFT390P250X71 | | | |
| | | | 3 | 480 | CXF390P25073 | CXFT390P25073 | CXF390P250R73 | CXFT390P250R73 | CXF390P250X73 | CXFT390P250X73 | | | |
| | | | 1 | 600 | CXF390P25081 | CXFT390P25081 | CXF390P250R81 | CXFT390P250R81 | CXF390P250X81 | CXFT390P250X81 | | | |
| | | | 3 | 600 | CXF390P25083 | CXFT390P25083 | CXF390P250R83 | CXFT390P250R83 | CXF390P250X83 | CXFT390P250X83 | | | |

To Order Specify

- Quantity
- Wattage
- Catalog number
- Special features
- Voltage

Table 4 – Screwplug Heaters (Three Element) - 2" NPT (Cont'd)

| | kW | Immersion Length 'B' | | Phase | Standard Voltage | General Purpose Terminal Box | | NEMA 4 Terminal Box | | Explosion-Proof Terminal Box | | Net Weight | |
|--|-----|----------------------|------|-------|------------------|------------------------------|---|---------------------|---|------------------------------|---|------------|----|
| | | in | mm | | | Without Thermostat | With Thermostat 50°F to 250°F (10°C to 120°C) | Without Thermostat | With Thermostat 50°F to 250°F (10°C to 120°C) | Without Thermostat | With Thermostat 50°F to 250°F (10°C to 120°C) | lbs | kg |
| | | | | | | | | | | | | | |
| Incoloy® Sheath Steel Plug 15 W/in ² (2.3 W/cm ²) | 1.5 | 17.7 | 450 | 1 | 120 | CXF315P211 | CXFT315P211 | CXF315P2R11 | CXFT315P2R11 | CXF315P2X11 | CXFT315P2X11 | 11 | 5 |
| | | | | 1 | 208 | CXF315P221 | CXFT315P221 | CXF315P2R21 | CXFT315P2R21 | CXF315P2X21 | CXFT315P2X21 | | |
| | | | | 3 | 208 | CXF315P223 | CXFT315P223 | CXF315P2R23 | CXFT315P2R23 | CXF315P2X23 | CXFT315P2X23 | | |
| | | | | 1 | 240 | CXF315P231 | CXFT315P231 | CXF315P2R31 | CXFT315P2R31 | CXF315P2X31 | CXFT315P2X31 | | |
| | | | | 1 | 480 | CXF315P271 | CXFT315P271 | CXF315P2R71 | CXFT315P2R71 | CXF315P2X71 | CXFT315P2X71 | | |
| | | | | 3 | 480 | CXF315P273 | CXFT315P273 | CXF315P2R73 | CXFT315P2R73 | CXF315P2X73 | CXFT315P2X73 | | |
| | | | | 1 | 600 | CXF315P281 | CXFT315P281 | CXF315P2R81 | CXFT315P2R81 | CXF315P2X81 | CXFT315P2X81 | | |
| | | | | 3 | 600 | CXF315P283 | CXFT315P283 | CXF315P2R83 | CXFT315P2R83 | CXF315P2X83 | CXFT315P2X83 | | |
| | 3.0 | 32.5 | 826 | 1 | 120 | CXF330P23211 | CXFT330P23211 | CXF330P232R11 | CXFT330P232R11 | CXF330P232X11 | CXFT330P232X11 | 15.4 | 7 |
| | | | | 1 | 208 | CXF330P23221 | CXFT330P23221 | CXF330P232R21 | CXFT330P232R21 | CXF330P232X21 | CXFT330P232X21 | | |
| | | | | 3 | 208 | CXF330P23223 | CXFT330P23223 | CXF330P232R23 | CXFT330P232R23 | CXF330P232X23 | CXFT330P232X23 | | |
| | | | | 1 | 240 | CXF330P23231 | CXFT330P23231 | CXF330P232R31 | CXFT330P232R31 | CXF330P232X31 | CXFT330P232X31 | | |
| | | | | 1 | 480 | CXF330P23271 | CXFT330P23271 | CXF330P232R71 | CXFT330P232R71 | CXF330P232X71 | CXFT330P232X71 | | |
| | | | | 3 | 480 | CXF330P23273 | CXFT330P23273 | CXF330P232R73 | CXFT330P232R73 | CXF330P232X73 | CXFT330P232X73 | | |
| | | | | 1 | 600 | CXF330P23281 | CXFT330P23281 | CXF330P232R81 | CXFT330P232R81 | CXF330P232X81 | CXFT330P232X81 | | |
| | | | | 3 | 600 | CXF330P23283 | CXFT330P23283 | CXF330P232R83 | CXFT330P232R83 | CXF330P232X83 | CXFT330P232X83 | | |
| | 4.5 | 39.4 | 1001 | 1 | 208 | CXF345P221 | CXFT345P221 | CXF345P2R21 | CXFT345P2R21 | CXF345P2X21 | CXFT345P2X21 | 15.4 | 7 |
| | | | | 3 | 208 | CXF345P223 | CXFT345P223 | CXF345P2R23 | CXFT345P2R23 | CXF345P2X23 | CXFT345P2X23 | | |
| | | | | 1 | 240 | CXF345P231 | CXFT345P231 | CXF345P2R31 | CXFT345P2R31 | CXF345P2X31 | CXFT345P2X31 | | |
| | | | | 1 | 480 | CXF345P271 | CXFT345P271 | CXF345P2R71 | CXFT345P2R71 | CXF345P2X71 | CXFT345P2X71 | | |
| | | | | 3 | 480 | CXF345P273 | CXFT345P273 | CXF345P2R73 | CXFT345P2R73 | CXF345P2X73 | CXFT345P2X73 | | |
| | | | | 1 | 600 | CXF345P281 | CXFT345P281 | CXF345P2R81 | CXFT345P2R81 | CXF345P2X81 | CXFT345P2X81 | | |
| | | | | 3 | 600 | CXF345P283 | CXFT345P283 | CXF345P2R83 | CXFT345P2R83 | CXF345P2X83 | CXFT345P2X83 | | |

To Order Specify

- Quantity
- Catalog number
- Voltage
- Wattage
- Special features

Table 5 – Screwplug Heaters (Three Element) - 2 1/2" NPT

| | kW | Immersion Length 'B' | | Phase | Standard Voltage | General Purpose Terminal Box | | NEMA 4 Terminal Box | | Explosion-Proof Terminal Box | | Net Weight | | | | | | |
|--|------|----------------------|--------------|-------|------------------|------------------------------|---|---------------------|---|------------------------------|---|----------------|---------------|----------------|--------------|---------------|------|---|
| | | in | mm | | | Without Thermostat | With Thermostat 50°F to 250°F (10°C to 120°C) | Without Thermostat | With Thermostat 50°F to 250°F (10°C to 120°C) | Without Thermostat | With Thermostat 50°F to 250°F (10°C to 120°C) | lbs | kg | | | | | |
| | | | | | | | | | | | | | | | | | | |
| Copper Sheath Brass Plug 54 to 60 W/in ² (8.3 to 8.9 W/cm ²) | 3.0 | 7.7 | 195 | 1 | 120 | CXC330P2511 | CXCT330P2511 | CXC330P25R11 | CXCT330P25R11 | CXC330P25X11 | CXCT330P25X11 | 8.8 | 4 | | | | | |
| | | | | 1 | 208 | CXC330P2521 | CXCT330P2521 | CXC330P25R21 | CXCT330P25R21 | CXC330P25X21 | CXCT330P25X21 | | | | | | | |
| | | | | 3 | 208 | CXC330P2523 | CXCT330P2523 | CXC330P25R23 | CXCT330P25R23 | CXC330P25X23 | CXCT330P25X23 | | | | | | | |
| | | | | 1 | 240 | CXC330P2531 | CXCT330P2531 | CXC330P25R31 | CXCT330P25R31 | CXC330P25X31 | CXCT330P25X31 | | | | | | | |
| | | | | 1 | 480 | CXC330P2571 | CXCT330P2571 | CXC330P25R71 | CXCT330P25R71 | CXC330P25X71 | CXCT330P25X71 | | | | | | | |
| | | | | 3 | 480 | CXC330P2573 | CXCT330P2573 | CXC330P25R73 | CXCT330P25R73 | CXC330P25X73 | CXCT330P25X73 | | | | | | | |
| | | | | 1 | 600 | CXC330P2581 | CXCT330P2581 | CXC330P25R81 | CXCT330P25R81 | CXC330P25X81 | CXCT330P25X81 | | | | | | | |
| | | | | 3 | 600 | CXC330P2583 | CXCT330P2583 | CXC330P25R83 | CXCT330P25R83 | CXC330P25X83 | CXCT330P25X83 | | | | | | | |
| | 4.5 | 11.6 | 295 | 1 | 208 | CXC345P2521 | CXCT345P2521 | CXC345P25R21 | CXCT345P25R21 | CXC345P25X21 | CXCT345P25X21 | 8.8 | 4 | | | | | |
| | | | | 3 | 208 | CXC345P2523 | CXCT345P2523 | CXC345P25R23 | CXCT345P25R23 | CXC345P25X23 | CXCT345P25X23 | | | | | | | |
| | | | | 1 | 240 | CXC345P2531 | CXCT345P2531 | CXC345P25R31 | CXCT345P25R31 | CXC345P25X31 | CXCT345P25X31 | | | | | | | |
| | | | | 1 | 480 | CXC345P2571 | CXCT345P2571 | CXC345P25R71 | CXCT345P25R71 | CXC345P25X71 | CXCT345P25X71 | | | | | | | |
| | | | | 3 | 480 | CXC345P2573 | CXCT345P2573 | CXC345P25R73 | CXCT345P25R73 | CXC345P25X73 | CXCT345P25X73 | | | | | | | |
| | | | | 1 | 600 | CXC345P2581 | CXCT345P2581 | CXC345P25R81 | CXCT345P25R81 | CXC345P25X81 | CXCT345P25X81 | | | | | | | |
| | | | | 3 | 600 | CXC345P2583 | CXCT345P2583 | CXC345P25R83 | CXCT345P25R83 | CXC345P25X83 | CXCT345P25X83 | | | | | | | |
| | | | | 6.0 | 17.5 | 445 | 1 | 208 | CXC360P2521 | CXCT360P2521 | CXC360P25R21 | | | CXCT360P25R21 | CXC360P25X21 | CXCT360P25X21 | 11 | 5 |
| | 3 | 208 | CXC360P2523 | | | | CXCT360P2523 | CXC360P25R23 | CXCT360P25R23 | CXC360P25X23 | CXCT360P25X23 | | | | | | | |
| | 1 | 240 | CXC360P2531 | | | | CXCT360P2531 | CXC360P25R31 | CXCT360P25R31 | CXC360P25X31 | CXCT360P25X31 | | | | | | | |
| | 1 | 480 | CXC360P2571 | | | | CXCT360P2571 | CXC360P25R71 | CXCT360P25R71 | CXC360P25X71 | CXCT360P25X71 | | | | | | | |
| | 3 | 480 | CXC360P2573 | | | | CXCT360P2573 | CXC360P25R73 | CXCT360P25R73 | CXC360P25X73 | CXCT360P25X73 | | | | | | | |
| | 1 | 600 | CXC360P2581 | | | | CXCT360P2581 | CXC360P25R81 | CXCT360P25R81 | CXC360P25X81 | CXCT360P25X81 | | | | | | | |
| | 3 | 600 | CXC360P2583 | | | | CXCT360P2583 | CXC360P25R83 | CXCT360P25R83 | CXC360P25X83 | CXCT360P25X83 | | | | | | | |
| | 7.5 | 21.5 | 545 | | | | 1 | 208 | CXC375P2521 | CXCT375P2521 | CXC375P25R21 | CXCT375P25R21 | CXC375P25X21 | CXCT375P25X21 | 11 | 5 | | |
| | | | | 3 | 208 | CXC375P2523 | CXCT375P2523 | CXC375P25R23 | CXCT375P25R23 | CXC375P25X23 | CXCT375P25X23 | | | | | | | |
| | | | | 1 | 240 | CXC375P2531 | CXCT375P2531 | CXC375P25R31 | CXCT375P25R31 | CXC375P25X31 | CXCT375P25X31 | | | | | | | |
| | | | | 1 | 480 | CXC375P2571 | CXCT375P2571 | CXC375P25R71 | CXCT375P25R71 | CXC375P25X71 | CXCT375P25X71 | | | | | | | |
| | | | | 3 | 480 | CXC375P2573 | CXCT375P2573 | CXC375P25R73 | CXCT375P25R73 | CXC375P25X73 | CXCT375P25X73 | | | | | | | |
| | | | | 1 | 600 | CXC375P2581 | CXCT375P2581 | CXC375P25R81 | CXCT375P25R81 | CXC375P25X81 | CXCT375P25X81 | | | | | | | |
| | | | | 3 | 600 | CXC375P2583 | CXCT375P2583 | CXC375P25R83 | CXCT375P25R83 | CXC375P25X83 | CXCT375P25X83 | | | | | | | |
| | | | | 9.0 | 25.4 | 645 | 3 | 208 | CXC390P2523 | CXCT390P2523 | CXC390P25R23 | CXCT390P25R23 | CXC390P25X23 | CXCT390P25X23 | | | 13.2 | 6 |
| | 1 | 240 | CXC390P2531 | | | | CXCT390P2531 | CXC390P25R31 | CXCT390P25R31 | CXC390P25X31 | CXCT390P25X31 | | | | | | | |
| | 1 | 480 | CXC390P2571 | | | | CXCT390P2571 | CXC390P25R71 | CXCT390P25R71 | CXC390P25X71 | CXCT390P25X71 | | | | | | | |
| | 3 | 480 | CXC390P2573 | | | | CXCT390P2573 | CXC390P25R73 | CXCT390P25R73 | CXC390P25X73 | CXCT390P25X73 | | | | | | | |
| | 1 | 600 | CXC390P2581 | | | | CXCT390P2581 | CXC390P25R81 | CXCT390P25R81 | CXC390P25X81 | CXCT390P25X81 | | | | | | | |
| | 3 | 600 | CXC390P2583 | | | | CXCT390P2583 | CXC390P25R83 | CXCT390P25R83 | CXC390P25X83 | CXCT390P25X83 | | | | | | | |
| | 12.0 | 32.3 | 820 | | | | 3 | 208 | CXC3120P2523 | CXCT3120P2523 | CXC3120P25R23 | CXCT3120P25R23 | CXC3120P25X23 | CXCT3120P25X23 | 13.2 | 6 | | |
| | | | | | | | 1 | 480 | CXC3120P2571 | CXCT3120P2571 | CXC3120P25R71 | CXCT3120P25R71 | CXC3120P25X71 | CXCT3120P25X71 | | | | |
| | | | | 3 | 480 | CXC3120P2573 | CXCT3120P2573 | CXC3120P25R73 | CXCT3120P25R73 | CXC3120P25X73 | CXCT3120P25X73 | | | | | | | |
| | | | | 1 | 600 | CXC3120P2581 | CXCT3120P2581 | CXC3120P25R81 | CXCT3120P25R81 | CXC3120P25X81 | CXCT3120P25X81 | | | | | | | |
| | | | | 3 | 600 | CXC3120P2583 | CXCT3120P2583 | CXC3120P25R83 | CXCT3120P25R83 | CXC3120P25X83 | CXCT3120P25X83 | | | | | | | |
| | | | | 15.0 | 39.2 | 995 | 3 | 208 | CXC3150P2523 | CXCT3150P2523 | CXC3150P25R23 | CXCT3150P25R23 | CXC3150P25X23 | CXCT3150P25X23 | | | 15.4 | 7 |
| | | | | | | | 1 | 480 | CXC3150P2571 | CXCT3150P2571 | CXC3150P25R71 | CXCT3150P25R71 | CXC3150P25X71 | CXCT3150P25X71 | | | | |
| | | | | | | | 3 | 480 | CXC3150P2573 | CXCT3150P2573 | CXC3150P25R73 | CXCT3150P25R73 | CXC3150P25X73 | CXCT3150P25X73 | | | | |
| | 1 | 600 | CXC3150P2581 | | | | CXCT3150P2581 | CXC3150P25R81 | CXCT3150P25R81 | CXC3150P25X81 | CXCT3150P25X81 | | | | | | | |
| | 3 | 600 | CXC3150P2583 | | | | CXCT3150P2583 | CXC3150P25R83 | CXCT3150P25R83 | CXC3150P25X83 | CXCT3150P25X83 | | | | | | | |
| | 18.0 | 47 | 1195 | | | | 3 | 208 | CXC3180P2523 | CXCT3180P2523 | CXC3180P25R23 | CXCT3180P25R23 | CXC3180P25X23 | CXCT3180P25X23 | 15.4 | 7 | | |
| | | | | | | | 1 | 480 | CXC3180P2571 | CXCT3180P2571 | CXC3180P25R71 | CXCT3180P25R71 | CXC3180P25X71 | CXCT3180P25X71 | | | | |
| | | | | | | | 3 | 480 | CXC3180P2573 | CXCT3180P2573 | CXC3180P25R73 | CXCT3180P25R73 | CXC3180P25X73 | CXCT3180P25X73 | | | | |
| 1 | | | | 600 | CXC3180P2581 | CXCT3180P2581 | CXC3180P25R81 | CXCT3180P25R81 | CXC3180P25X81 | CXCT3180P25X81 | | | | | | | | |
| 3 | | | | 600 | CXC3180P2583 | CXCT3180P2583 | CXC3180P25R83 | CXCT3180P25R83 | CXC3180P25X83 | CXCT3180P25X83 | | | | | | | | |

Table 5 – Screwplug Heaters (Three Element) - 2 1/2" NPT (Cont'd)

| | kW | Immersion Length 'B' | | Phase | Standard Voltage | General Purpose Terminal Box | | NEMA 4 Terminal Box | | Explosion-Proof Terminal Box | | Net Weight | | | |
|--|------|----------------------|-------------|-------|------------------|------------------------------|---|---------------------|---|------------------------------|---|--------------------|---|---------------|--------------|
| | | in | mm | | | Without Thermostat | With Thermostat 50°F to 250°F (10°C to 120°C) | Without Thermostat | With Thermostat 50°F to 250°F (10°C to 120°C) | Without Thermostat | With Thermostat 50°F to 250°F (10°C to 120°C) | Without Thermostat | With Thermostat 50°F to 250°F (10°C to 120°C) | lbs | kg |
| | | | | | | | | | | | | | | | |
| Incoloy® Sheath Stainless Steel Plug 54 to 60 W/in ² (8.3 to 8.9 W/cm ²) | 3.0 | 7.7 | 195 | 1 | 120 | CXI330P2511 | CXIT330P2511 | CXI330P25R11 | CXIT330P25R11 | CXI330P25X11 | CXIT330P25X11 | 8.8 | 4 | | |
| | | | | 1 | 208 | CXI330P2521 | CXIT330P2521 | CXI330P25R21 | CXIT330P25R21 | CXI330P25X21 | CXIT330P25X21 | | | | |
| | | | | 3 | 208 | CXI330P2523 | CXIT330P2523 | CXI330P25R23 | CXIT330P25R23 | CXI330P25X23 | CXIT330P25X23 | | | | |
| | | | | 1 | 240 | CXI330P2531 | CXIT330P2531 | CXI330P25R31 | CXIT330P25R31 | CXI330P25X31 | CXIT330P25X31 | | | | |
| | | | | 1 | 480 | CXI330P2571 | CXIT330P2571 | CXI330P25R71 | CXIT330P25R71 | CXI330P25X71 | CXIT330P25X71 | | | | |
| | | | | 3 | 480 | CXI330P2573 | CXIT330P2573 | CXI330P25R73 | CXIT330P25R73 | CXI330P25X73 | CXIT330P25X73 | | | | |
| | | | | 1 | 600 | CXI330P2581 | CXIT330P2581 | CXI330P25R81 | CXIT330P25R81 | CXI330P25X81 | CXIT330P25X81 | | | | |
| | | | | 3 | 600 | CXI330P2583 | CXIT330P2583 | CXI330P25R83 | CXIT330P25R83 | CXI330P25X83 | CXIT330P25X83 | | | | |
| | 4.5 | 11.6 | 295 | 1 | 208 | CXI345P2521 | CXIT345P2521 | CXI345P25R21 | CXIT345P25R21 | CXI345P25X21 | CXIT345P25X21 | 8.8 | 4 | | |
| | | | | 3 | 208 | CXI345P2523 | CXIT345P2523 | CXI345P25R23 | CXIT345P25R23 | CXI345P25X23 | CXIT345P25X23 | | | | |
| | | | | 1 | 240 | CXI345P2531 | CXIT345P2531 | CXI345P25R31 | CXIT345P25R31 | CXI345P25X31 | CXIT345P25X31 | | | | |
| | | | | 1 | 480 | CXI345P2571 | CXIT345P2571 | CXI345P25R71 | CXIT345P25R71 | CXI345P25X71 | CXIT345P25X71 | | | | |
| | | | | 3 | 480 | CXI345P2573 | CXIT345P2573 | CXI345P25R73 | CXIT345P25R73 | CXI345P25X73 | CXIT345P25X73 | | | | |
| | | | | 1 | 600 | CXI345P2581 | CXIT345P2581 | CXI345P25R81 | CXIT345P25R81 | CXI345P25X81 | CXIT345P25X81 | | | | |
| | | | | 3 | 600 | CXI345P2583 | CXIT345P2583 | CXI345P25R83 | CXIT345P25R83 | CXI345P25X83 | CXIT345P25X83 | | | | |
| | | | | 6.0 | 17.5 | 445 | 1 | 208 | CXI360P2521 | CXIT360P2521 | CXI360P25R21 | | | CXIT360P25R21 | CXI360P25X21 |
| | 3 | 208 | CXI360P2523 | | | | CXIT360P2523 | CXI360P25R23 | CXIT360P25R23 | CXI360P25X23 | CXIT360P25X23 | | | | |
| | 1 | 240 | CXI360P2531 | | | | CXIT360P2531 | CXI360P25R31 | CXIT360P25R31 | CXI360P25X31 | CXIT360P25X31 | | | | |
| | 1 | 480 | CXI360P2571 | | | | CXIT360P2571 | CXI360P25R71 | CXIT360P25R71 | CXI360P25X71 | CXIT360P25X71 | | | | |
| | 3 | 480 | CXI360P2573 | | | | CXIT360P2573 | CXI360P25R73 | CXIT360P25R73 | CXI360P25X73 | CXIT360P25X73 | | | | |
| | 1 | 600 | CXI360P2581 | | | | CXIT360P2581 | CXI360P25R81 | CXIT360P25R81 | CXI360P25X81 | CXIT360P25X81 | | | | |
| | 3 | 600 | CXI360P2583 | | | | CXIT360P2583 | CXI360P25R83 | CXIT360P25R83 | CXI360P25X83 | CXIT360P25X83 | | | | |
| | 7.5 | 21.5 | 545 | | | | 1 | 208 | CXI375P2521 | CXIT375P2521 | CXI375P25R21 | CXIT375P25R21 | CXI375P25X21 | CXIT375P25X21 | 11 |
| | | | | 3 | 208 | CXI375P2523 | CXIT375P2523 | CXI375P25R23 | CXIT375P25R23 | CXI375P25X23 | CXIT375P25X23 | | | | |
| | | | | 1 | 240 | CXI375P2531 | CXIT375P2531 | CXI375P25R31 | CXIT375P25R31 | CXI375P25X31 | CXIT375P25X31 | | | | |
| | | | | 1 | 480 | CXI375P2571 | CXIT375P2571 | CXI375P25R71 | CXIT375P25R71 | CXI375P25X71 | CXIT375P25X71 | | | | |
| | | | | 3 | 480 | CXI375P2573 | CXIT375P2573 | CXI375P25R73 | CXIT375P25R73 | CXI375P25X73 | CXIT375P25X73 | | | | |
| | | | | 1 | 600 | CXI375P2581 | CXIT375P2581 | CXI375P25R81 | CXIT375P25R81 | CXI375P25X81 | CXIT375P25X81 | | | | |
| 3 | | | | 600 | CXI375P2583 | CXIT375P2583 | CXI375P25R83 | CXIT375P25R83 | CXI375P25X83 | CXIT375P25X83 | | | | | |
| 9.0 | | | | 25.4 | 645 | 3 | 208 | CXI390P2523 | CXIT390P2523 | CXI390P25R23 | CXIT390P25R23 | CXI390P25X23 | CXIT390P25X23 | 13.2 | |
| | | 240 | CXI390P2531 | | | CXIT390P2531 | CXI390P25R31 | CXIT390P25R31 | CXI390P25X31 | CXIT390P25X31 | | | | | |
| | | 480 | CXI390P2571 | | | CXIT390P2571 | CXI390P25R71 | CXIT390P25R71 | CXI390P25X71 | CXIT390P25X71 | | | | | |
| | | 480 | CXI390P2573 | | | CXIT390P2573 | CXI390P25R73 | CXIT390P25R73 | CXI390P25X73 | CXIT390P25X73 | | | | | |
| | | 600 | CXI390P2581 | | | CXIT390P2581 | CXI390P25R81 | CXIT390P25R81 | CXI390P25X81 | CXIT390P25X81 | | | | | |
| | | 600 | CXI390P2583 | | | CXIT390P2583 | CXI390P25R83 | CXIT390P25R83 | CXI390P25X83 | CXIT390P25X83 | | | | | |
| 12.0 | 32.3 | 820 | 3 | 208 | CXI3120P2523 | CXIT3120P2523 | CXI3120P25R23 | CXIT3120P25R23 | CXI3120P25X23 | CXIT3120P25X23 | 13.2 | 6 | | | |
| | | | 1 | 480 | CXI3120P2571 | CXIT3120P2571 | CXI3120P25R71 | CXIT3120P25R71 | CXI3120P25X71 | CXIT3120P25X71 | | | | | |
| | | | 3 | 480 | CXI3120P2573 | CXIT3120P2573 | CXI3120P25R73 | CXIT3120P25R73 | CXI3120P25X73 | CXIT3120P25X73 | | | | | |
| | | | 1 | 600 | CXI3120P2581 | CXIT3120P2581 | CXI3120P25R81 | CXIT3120P25R81 | CXI3120P25X81 | CXIT3120P25X81 | | | | | |
| | | | 3 | 600 | CXI3120P2583 | CXIT3120P2583 | CXI3120P25R83 | CXIT3120P25R83 | CXI3120P25X83 | CXIT3120P25X83 | | | | | |
| 15.0 | 39.2 | 820 | 3 | 208 | CXI3150P2523 | CXIT3150P2523 | CXI3150P25R23 | CXIT3150P25R23 | CXI3150P25X23 | CXIT3150P25X23 | 15.4 | 7 | | | |
| | | | 1 | 480 | CXI3150P2571 | CXIT3150P2571 | CXI3150P25R71 | CXIT3150P25R71 | CXI3150P25X71 | CXIT3150P25X71 | | | | | |
| | | | 3 | 480 | CXI3150P2573 | CXIT3150P2573 | CXI3150P25R73 | CXIT3150P25R73 | CXI3150P25X73 | CXIT3150P25X73 | | | | | |
| | | | 1 | 600 | CXI3150P2581 | CXIT3150P2581 | CXI3150P25R81 | CXIT3150P25R81 | CXI3150P25X81 | CXIT3150P25X81 | | | | | |
| | | | 3 | 600 | CXI3150P2583 | CXIT3150P2583 | CXI3150P25R83 | CXIT3150P25R83 | CXI3150P25X83 | CXIT3150P25X83 | | | | | |
| 18.0 | 47 | 1195 | 3 | 208 | CXI3180P2523 | CXIT3180P2523 | CXI3180P25R23 | CXIT3180P25R23 | CXI3180P25X23 | CXIT3180P25X23 | 15.4 | 7 | | | |
| | | | 1 | 480 | CXI3180P2571 | CXIT3180P2571 | CXI3180P25R71 | CXIT3180P25R71 | CXI3180P25X71 | CXIT3180P25X71 | | | | | |
| | | | 3 | 480 | CXI3180P2573 | CXIT3180P2573 | CXI3180P25R73 | CXIT3180P25R73 | CXI3180P25X73 | CXIT3180P25X73 | | | | | |
| | | | 1 | 600 | CXI3180P2581 | CXIT3180P2581 | CXI3180P25R81 | CXIT3180P25R81 | CXI3180P25X81 | CXIT3180P25X81 | | | | | |
| | | | 3 | 600 | CXI3180P2583 | CXIT3180P2583 | CXI3180P25R83 | CXIT3180P25R83 | CXI3180P25X83 | CXIT3180P25X83 | | | | | |

Table 5 – Screwplug Heaters (Three Element) - 2 1/2" NPT (Cont'd)

| | kW | Immersion Length 'B' | | Phase | Standard Voltage | General Purpose Terminal Box | | NEMA 4 Terminal Box | | Explosion-Proof Terminal Box | | Net Weight | |
|--|-----|----------------------|------|-------|------------------|------------------------------|---|---------------------|---|------------------------------|---|------------|----|
| | | in | mm | | | Without Thermostat | With Thermostat 50°F to 250°F (10°C to 120°C) | Without Thermostat | With Thermostat 50°F to 250°F (10°C to 120°C) | Without Thermostat | With Thermostat 50°F to 250°F (10°C to 120°C) | lbs | kg |
| | | | | | | | | | | | | | |
| Incoloy® Sheath Steel Plug 23 W/in² (3.6 W/cm²) | 3.0 | 17.5 | 445 | 1 | 120 | CXF330P2511 | CXFT330P2511 | CXF330P25R11 | CXFT330P25R11 | CXF330P25X11 | CXFT330P25X11 | 11 | 5 |
| | | | | 1 | 208 | CXF330P2521 | CXFT330P2521 | CXF330P25R21 | CXFT330P25R21 | CXF330P25X21 | CXFT330P25X21 | | |
| | | | | 3 | 208 | CXF330P2523 | CXFT330P2523 | CXF330P25R23 | CXFT330P25R23 | CXF330P25X23 | CXFT330P25X23 | | |
| | | | | 1 | 240 | CXF330P2531 | CXFT330P2531 | CXF330P25R31 | CXFT330P25R31 | CXF330P25X31 | CXFT330P25X31 | | |
| | | | | 1 | 480 | CXF330P2571 | CXFT330P2571 | CXF330P25R71 | CXFT330P25R71 | CXF330P25X71 | CXFT330P25X71 | | |
| | | | | 3 | 480 | CXF330P2573 | CXFT330P2573 | CXF330P25R73 | CXFT330P25R73 | CXF330P25X73 | CXFT330P25X73 | | |
| | | | | 1 | 600 | CXF330P2581 | CXFT330P2581 | CXF330P25R81 | CXFT330P25R81 | CXF330P25X81 | CXFT330P25X81 | | |
| | | | | 3 | 600 | CXF330P2583 | CXFT330P2583 | CXF330P25R83 | CXFT330P25R83 | CXF330P25X83 | CXFT330P25X83 | | |
| | 6.0 | 25.4 | 645 | 1 | 208 | CXF345P2521 | CXFT345P2521 | CXF345P25R21 | CXFT345P25R21 | CXF345P25X21 | CXFT345P25X21 | 13.2 | 6 |
| | | | | 3 | 208 | CXF345P2523 | CXFT345P2523 | CXF345P25R23 | CXFT345P25R23 | CXF345P25X23 | CXFT345P25X23 | | |
| | | | | 1 | 240 | CXF345P2531 | CXFT345P2531 | CXF345P25R31 | CXFT345P25R31 | CXF345P25X31 | CXFT345P25X31 | | |
| | | | | 1 | 480 | CXF345P2571 | CXFT345P2571 | CXF345P25R71 | CXFT345P25R71 | CXF345P25X71 | CXFT345P25X71 | | |
| | | | | 3 | 480 | CXF345P2573 | CXFT345P2573 | CXF345P25R73 | CXFT345P25R73 | CXF345P25X73 | CXFT345P25X73 | | |
| | | | | 1 | 600 | CXF345P2581 | CXFT345P2581 | CXF345P25R81 | CXFT345P25R81 | CXF345P25X81 | CXFT345P25X81 | | |
| | | | | 3 | 600 | CXF345P2583 | CXFT345P2583 | CXF345P25R83 | CXFT345P25R83 | CXF345P25X83 | CXFT345P25X83 | | |
| | | | | 1 | 208 | CXF360P253421 | CXFT360P253421 | CXF360P2534R21 | CXFT360P2534R21 | CXF360P2534X21 | CXFT360P2534X21 | | |
| | | | | 3 | 208 | CXF360P253423 | CXFT360P253423 | CXF360P2534R23 | CXFT360P2534R23 | CXF360P2534X23 | CXFT360P2534X23 | | |
| | | | | 1 | 240 | CXF360P253431 | CXFT360P253431 | CXF360P2534R31 | CXFT360P2534R31 | CXF360P2534X31 | CXFT360P2534X31 | | |
| | | | | 1 | 480 | CXF360P253471 | CXFT360P253471 | CXF360P2534R71 | CXFT360P2534R71 | CXF360P2534X71 | CXFT360P2534X71 | | |
| | | | | 3 | 480 | CXF360P253473 | CXFT360P253473 | CXF360P2534R73 | CXFT360P2534R73 | CXF360P2534X73 | CXFT360P2534X73 | | |
| | 7.5 | 42 | 1067 | 3 | 208 | CXF375P254223 | CXFT375P254223 | CXF375P2542R23 | CXFT375P2542R23 | CXF375P2542X23 | CXFT375P2542X23 | 15.4 | 7 |
| | | | | 1 | 240 | CXF375P254231 | CXFT375P254231 | CXF375P2542R31 | CXFT375P2542R31 | CXF375P2542X31 | CXFT375P2542X31 | | |
| | | | | 1 | 480 | CXF375P254271 | CXFT375P254271 | CXF375P2542R71 | CXFT375P2542R71 | CXF375P2542X71 | CXFT375P2542X71 | | |
| | | | | 3 | 480 | CXF375P254273 | CXFT375P254273 | CXF375P2542R73 | CXFT375P2542R73 | CXF375P2542X73 | CXFT375P2542X73 | | |
| | | | | 1 | 600 | CXF375P254281 | CXFT375P254281 | CXF375P2542R81 | CXFT375P2542R81 | CXF375P2542X81 | CXFT375P2542X81 | | |
| | | | | 3 | 600 | CXF375P254283 | CXFT375P254283 | CXF375P2542R83 | CXFT375P2542R83 | CXF375P2542X83 | CXFT375P2542X83 | | |
| | 9.0 | 50 | 1270 | 3 | 208 | CXF390P25023 | CXFT390P25023 | CXF390P250R23 | CXFT390P250R23 | CXF390P250X23 | CXFT390P250X23 | 15.4 | 7 |
| | | | | 1 | 240 | CXF390P25031 | CXFT390P25031 | CXF390P250R31 | CXFT390P250R31 | CXF390P250X31 | CXFT390P250X31 | | |
| | | | | 1 | 480 | CXF390P25071 | CXFT390P25071 | CXF390P250R71 | CXFT390P250R71 | CXF390P250X71 | CXFT390P250X71 | | |
| | | | | 3 | 480 | CXF390P25073 | CXFT390P25073 | CXF390P250R73 | CXFT390P250R73 | CXF390P250X73 | CXFT390P250X73 | | |
| | | | | 1 | 600 | CXF390P25081 | CXFT390P25081 | CXF390P250R81 | CXFT390P250R81 | CXF390P250X81 | CXFT390P250X81 | | |
| | | | | 3 | 600 | CXF390P25083 | CXFT390P25083 | CXF390P250R83 | CXFT390P250R83 | CXF390P250X83 | CXFT390P250X83 | | |

To Order Specify

- Quantity
- Wattage
- Catalog number
- Special features
- Voltage

Table 5 – Screwplug Heaters (Three Element) - 2 1/2" NPT (Cont'd)

| | kW | Immersion Length 'B' | | Phase | Standard Voltage | General Purpose Terminal Box | | NEMA 4 Terminal Box | | Explosion-Proof Terminal Box | | Net Weight | |
|---|-----|----------------------|----------------|----------------|------------------|------------------------------|---|---------------------|---|------------------------------|---|------------|----|
| | | in | mm | | | Without Thermostat | With Thermostat 50°F to 250°F (10°C to 120°C) | Without Thermostat | With Thermostat 50°F to 250°F (10°C to 120°C) | Without Thermostat | With Thermostat 50°F to 250°F (10°C to 120°C) | lbs | kg |
| | | | | | | | | | | | | | |
| Incoloy® Sheath Stainless Steel Plug 23 W/in ² (3.6 W/cm ²) | 3.0 | 17.5 | 445 | 1 | 120 | CXI330P251711 | CXIT330P251711 | CXI330P2517R11 | CXIT330P2517R11 | CXI330P2517X11 | CXIT330P2517X11 | 11 | 5 |
| | | | | 1 | 208 | CXI330P251721 | CXIT330P251721 | CXI330P2517R21 | CXIT330P2517R21 | CXI330P2517X21 | CXIT330P2517X21 | | |
| | | | | 3 | 208 | CXI330P251723 | CXIT330P251723 | CXI330P2517R23 | CXIT330P2517R23 | CXI330P2517X23 | CXIT330P2517X23 | | |
| | | | | 1 | 240 | CXI330P251731 | CXIT330P251731 | CXI330P2517R31 | CXIT330P2517R31 | CXI330P2517X31 | CXIT330P2517X31 | | |
| | | | | 1 | 480 | CXI330P251771 | CXIT330P251771 | CXI330P2517R71 | CXIT330P2517R71 | CXI330P2517X71 | CXIT330P2517X71 | | |
| | | | | 3 | 480 | CXI330P251773 | CXIT330P251773 | CXI330P2517R73 | CXIT330P2517R73 | CXI330P2517X73 | CXIT330P2517X73 | | |
| | | | | 1 | 600 | CXI330P251781 | CXIT330P251781 | CXI330P2517R81 | CXIT330P2517R81 | CXI330P2517X81 | CXIT330P2517X81 | | |
| | | | | 3 | 600 | CXI330P251783 | CXIT330P251783 | CXI330P2517R83 | CXIT330P2517R83 | CXI330P2517X83 | CXIT330P2517X83 | | |
| | 4.5 | 25.4 | 645 | 1 | 208 | CXI345P252521 | CXIT345P252521 | CXI345P2525R21 | CXIT345P2525R21 | CXI345P2525X21 | CXIT345P2525X21 | 13.2 | 5 |
| | | | | 3 | 208 | CXI345P252523 | CXIT345P252523 | CXI345P2525R23 | CXIT345P2525R23 | CXI345P2525X23 | CXIT345P2525X23 | | |
| | | | | 1 | 240 | CXI345P252531 | CXIT345P252531 | CXI345P2525R31 | CXIT345P2525R31 | CXI345P2525X31 | CXIT345P2525X31 | | |
| | | | | 1 | 480 | CXI345P252571 | CXIT345P252571 | CXI345P2525R71 | CXIT345P2525R71 | CXI345P2525X71 | CXIT345P2525X71 | | |
| | | | | 3 | 480 | CXI345P252573 | CXIT345P252573 | CXI345P2525R73 | CXIT345P2525R73 | CXI345P2525X73 | CXIT345P2525X73 | | |
| | | | | 1 | 600 | CXI345P252581 | CXIT345P252581 | CXI345P2525R81 | CXIT345P2525R81 | CXI345P2525X81 | CXIT345P2525X81 | | |
| | | | | 3 | 600 | CXI345P252583 | CXIT345P252583 | CXI345P2525R83 | CXIT345P2525R83 | CXI345P2525X83 | CXIT345P2525X83 | | |
| | 6.0 | 34 | 864 | 1 | 208 | CXI360P253421 | CXIT360P253421 | CXI360P2534R21 | CXIT360P2534R21 | CXI360P2534X21 | CXIT360P2534X21 | 13.2 | 5 |
| | | | | 3 | 208 | CXI360P253423 | CXIT360P253423 | CXI360P2534R23 | CXIT360P2534R23 | CXI360P2534X23 | CXIT360P2534X23 | | |
| | | | | 1 | 240 | CXI360P253431 | CXIT360P253431 | CXI360P2534R31 | CXIT360P2534R31 | CXI360P2534X31 | CXIT360P2534X31 | | |
| | | | | 1 | 480 | CXI360P253471 | CXIT360P253471 | CXI360P2534R71 | CXIT360P2534R71 | CXI360P2534X71 | CXIT360P2534X71 | | |
| | | | | 3 | 480 | CXI360P253473 | CXIT360P253473 | CXI360P2534R73 | CXIT360P2534R73 | CXI360P2534X73 | CXIT360P2534X73 | | |
| | | | | 1 | 600 | CXI360P253481 | CXIT360P253481 | CXI360P2534R81 | CXIT360P2534R81 | CXI360P2534X81 | CXIT360P2534X81 | | |
| | | | | 3 | 600 | CXI360P253483 | CXIT360P253483 | CXI360P2534R83 | CXIT360P2534R83 | CXI360P2534X83 | CXIT360P2534X83 | | |
| | 7.5 | 42 | 1067 | 3 | 208 | CXI375P254223 | CXIT375P254223 | CXI375P2542R23 | CXIT375P2542R23 | CXI375P2542X23 | CXIT375P2542X23 | 15.4 | 7 |
| | | | | 1 | 240 | CXI375P254231 | CXIT375P254231 | CXI375P2542R31 | CXIT375P2542R31 | CXI375P2542X31 | CXIT375P2542X31 | | |
| | | | | 1 | 480 | CXI375P254271 | CXIT375P254271 | CXI375P2542R71 | CXIT375P2542R71 | CXI375P2542X71 | CXIT375P2542X71 | | |
| | | | | 3 | 480 | CXI375P254273 | CXIT375P254273 | CXI375P2542R73 | CXIT375P2542R73 | CXI375P2542X73 | CXIT375P2542X73 | | |
| | | | | 1 | 600 | CXI375P254281 | CXIT375P254281 | CXI375P2542R81 | CXIT375P2542R81 | CXI375P2542X81 | CXIT375P2542X81 | | |
| | | | | 3 | 600 | CXI375P254283 | CXIT375P254283 | CXI375P2542R83 | CXIT375P2542R83 | CXI375P2542X83 | CXIT375P2542X83 | | |
| 3 | | | | 600 | CXI390P255083 | CXIT390P255083 | CXI390P2550R83 | CXIT390P2550R83 | CXI390P2550X83 | CXIT390P2550X83 | | | |
| 9.0 | 50 | 1270 | 3 | 208 | CXI390P255023 | CXIT390P255023 | CXI390P2550R23 | CXIT390P2550R23 | CXI390P2550X23 | CXIT390P2550X23 | 15.4 | 7 | |
| | | | 1 | 240 | CXI390P255031 | CXIT390P255031 | CXI390P2550R31 | CXIT390P2550R31 | CXI390P2550X31 | CXIT390P2550X31 | | | |
| | | | 1 | 480 | CXI390P255071 | CXIT390P255071 | CXI390P2550R71 | CXIT390P2550R71 | CXI390P2550X71 | CXIT390P2550X71 | | | |
| | | | 3 | 480 | CXI390P255073 | CXIT390P255073 | CXI390P2550R73 | CXIT390P2550R73 | CXI390P2550X73 | CXIT390P2550X73 | | | |
| | | | 1 | 600 | CXI390P255081 | CXIT390P255081 | CXI390P2550R81 | CXIT390P2550R81 | CXI390P2550X81 | CXIT390P2550X81 | | | |
| | | | 3 | 600 | CXI390P255083 | CXIT390P255083 | CXI390P2550R83 | CXIT390P2550R83 | CXI390P2550X83 | CXIT390P2550X83 | | | |
| | | | 3 | 600 | CXI390P255083 | CXIT390P255083 | CXI390P2550R83 | CXIT390P2550R83 | CXI390P2550X83 | CXIT390P2550X83 | | | |
| Incoloy® Sheath Steel Plug 15 W/in ² (2.3 W/cm ²) | 1.5 | 17.7 | 450 | 1 | 120 | CXF315P251711 | CXFT315P251711 | CXF315P2517R11 | CXFT315P2517R11 | CXF315P2517X11 | CXFT315P2517X11 | 11 | 5 |
| | | | | 1 | 208 | CXF315P251721 | CXFT315P251721 | CXF315P2517R21 | CXFT315P2517R21 | CXF315P2517X21 | CXFT315P2517X21 | | |
| | | | | 3 | 208 | CXF315P251723 | CXFT315P251723 | CXF315P2517R23 | CXFT315P2517R23 | CXF315P2517X23 | CXFT315P2517X23 | | |
| | | | | 1 | 240 | CXF315P251731 | CXFT315P251731 | CXF315P2517R31 | CXFT315P2517R31 | CXF315P2517X31 | CXFT315P2517X31 | | |
| | | | | 1 | 480 | CXF315P251771 | CXFT315P251771 | CXF315P2517R71 | CXFT315P2517R71 | CXF315P2517X71 | CXFT315P2517X71 | | |
| | | | | 3 | 480 | CXF315P251773 | CXFT315P251773 | CXF315P2517R73 | CXFT315P2517R73 | CXF315P2517X73 | CXFT315P2517X73 | | |
| | | | | 1 | 600 | CXF315P251781 | CXFT315P251781 | CXF315P2517R81 | CXFT315P2517R81 | CXF315P2517X81 | CXFT315P2517X81 | | |
| | | | | 3 | 600 | CXF315P251783 | CXFT315P251783 | CXF315P2517R83 | CXFT315P2517R83 | CXF315P2517X83 | CXFT315P2517X83 | | |
| | 3.0 | 32.5 | 825 | 1 | 120 | CXF330P253211 | CXFT330P253211 | CXF330P2532R11 | CXFT330P2532R11 | CXF330P2532X11 | CXFT330P2532X11 | 15.4 | 7 |
| | | | | 1 | 208 | CXF330P253221 | CXFT330P253221 | CXF330P2532R21 | CXFT330P2532R21 | CXF330P2532X21 | CXFT330P2532X21 | | |
| | | | | 3 | 208 | CXF330P253223 | CXFT330P253223 | CXF330P2532R23 | CXFT330P2532R23 | CXF330P2532X23 | CXFT330P2532X23 | | |
| | | | | 1 | 240 | CXF330P253231 | CXFT330P253231 | CXF330P2532R31 | CXFT330P2532R31 | CXF330P2532X31 | CXFT330P2532X31 | | |
| | | | | 1 | 480 | CXF330P253271 | CXFT330P253271 | CXF330P2532R71 | CXFT330P2532R71 | CXF330P2532X71 | CXFT330P2532X71 | | |
| | | | | 3 | 480 | CXF330P253273 | CXFT330P253273 | CXF330P2532R73 | CXFT330P2532R73 | CXF330P2532X73 | CXFT330P2532X73 | | |
| | | | | 1 | 600 | CXF330P253281 | CXFT330P253281 | CXF330P2532R81 | CXFT330P2532R81 | CXF330P2532X81 | CXFT330P2532X81 | | |
| 3 | 600 | CXF330P253283 | CXFT330P253283 | CXF330P2532R83 | CXFT330P2532R83 | CXF330P2532X83 | CXFT330P2532X83 | | | | | | |

Table 5 – Screwplug Heaters (Three Element) - 2 1/2" NPT (Cont'd)

| | kW | Immersion Length 'B' | | Phase | Standard Voltage | General Purpose Terminal Box | | NEMA 4 Terminal Box | | Explosion-Proof Terminal Box | | Net Weight | |
|--|------|----------------------|------|-------|------------------|------------------------------|---|---------------------|---|------------------------------|---|------------|----|
| | | in | mm | | | Without Thermostat | With Thermostat 50°F to 250°F (10°C to 120°C) | Without Thermostat | With Thermostat 50°F to 250°F (10°C to 120°C) | Without Thermostat | With Thermostat 50°F to 250°F (10°C to 120°C) | lbs | kg |
| | | | | | | | | | | | | | |
| Incoloy® Sheath Steel Plug 15 W/in² (2.3 W/cm²) | 4.5 | 39.2 | 995 | 1 | 208 | CXF345P253921 | CXFT345P253921 | CXF345P2539R21 | CXFT345P2539R21 | CXF345P2539X21 | CXFT345P2539X21 | 15.4 | 7 |
| | | | | 3 | 208 | CXF345P253923 | CXFT345P253923 | CXF345P2539R23 | CXFT345P2539R23 | CXF345P2539X23 | CXFT345P2539X23 | | |
| | | | | 1 | 240 | CXF345P253931 | CXFT345P253931 | CXF345P2539R31 | CXFT345P2539R31 | CXF345P2539X31 | CXFT345P2539X31 | | |
| | | | | 1 | 480 | CXF345P253971 | CXFT345P253971 | CXF345P2539R71 | CXFT345P2539R71 | CXF345P2539X71 | CXFT345P2539X71 | | |
| | | | | 3 | 480 | CXF345P253973 | CXFT345P253973 | CXF345P2539R73 | CXFT345P2539R73 | CXF345P2539X73 | CXFT345P2539X73 | | |
| | | | | 1 | 600 | CXF345P253981 | CXFT345P253981 | CXF345P2539R81 | CXFT345P2539R81 | CXF345P2539X81 | CXFT345P2539X81 | | |
| | 6.0 | 51 | 1295 | 3 | 600 | CXF345P253983 | CXFT345P253983 | CXF345P2539R83 | CXFT345P2539R83 | CXF345P2539X83 | CXFT345P2539X83 | 15.4 | 7 |
| | | | | 1 | 208 | CXF360P255121 | CXFT360P255121 | CXF360P2551R21 | CXFT360P2551R21 | CXF360P2551X21 | CXFT360P2551X21 | | |
| | | | | 3 | 208 | CXF360P255123 | CXFT360P255123 | CXF360P2551R23 | CXFT360P2551R23 | CXF360P2551X23 | CXFT360P2551X23 | | |
| | | | | 1 | 240 | CXF360P255131 | CXFT360P255131 | CXF360P2551R31 | CXFT360P2551R31 | CXF360P2551X31 | CXFT360P2551X31 | | |
| | | | | 1 | 480 | CXF360P255171 | CXFT360P255171 | CXF360P2551R71 | CXFT360P2551R71 | CXF360P2551X71 | CXFT360P2551X71 | | |
| | | | | 3 | 480 | CXF360P255173 | CXFT360P255173 | CXF360P2551R73 | CXFT360P2551R73 | CXF360P2551X73 | CXFT360P2551X73 | | |
| | | | | 1 | 600 | CXF360P255181 | CXFT360P255181 | CXF360P2551R81 | CXFT360P2551R81 | CXF360P2551X81 | CXFT360P2551X81 | | |
| | | | | 3 | 600 | CXF360P255183 | CXFT360P255183 | CXF360P2551R83 | CXFT360P2551R83 | CXF360P2551X83 | CXFT360P2551X83 | | |
| Incoloy® Sheath Stainless Steel Plug 15 W/in² (2.3 W/cm²) | 1.5 | 17.7 | 450 | 1 | 120 | CXI315P251711 | CXIT315P251711 | CXI315P2517R11 | CXIT315P2517R11 | CXI315P2517X11 | CXIT315P2517X11 | 11 | 5 |
| | | | | 1 | 208 | CXI315P251721 | CXIT315P251721 | CXI315P2517R21 | CXIT315P2517R21 | CXI315P2517X21 | CXIT315P2517X21 | | |
| | | | | 3 | 208 | CXI315P251723 | CXIT315P251723 | CXI315P2517R23 | CXIT315P2517R23 | CXI315P2517X23 | CXIT315P2517X23 | | |
| | | | | 1 | 240 | CXI315P251731 | CXIT315P251731 | CXI315P2517R31 | CXIT315P2517R31 | CXI315P2517X31 | CXIT315P2517X31 | | |
| | | | | 1 | 480 | CXI315P251771 | CXIT315P251771 | CXI315P2517R71 | CXIT315P2517R71 | CXI315P2517X71 | CXIT315P2517X71 | | |
| | | | | 3 | 480 | CXI315P251773 | CXIT315P251773 | CXI315P2517R73 | CXIT315P2517R73 | CXI315P2517X73 | CXIT315P2517X73 | | |
| | | | | 1 | 600 | CXI315P251781 | CXIT315P251781 | CXI315P2517R81 | CXIT315P2517R81 | CXI315P2517X81 | CXIT315P2517X81 | | |
| | | | | 3 | 600 | CXI315P251783 | CXIT315P251783 | CXI315P2517R83 | CXIT315P2517R83 | CXI315P2517X83 | CXIT315P2517X83 | | |
| | 3.0 | 32.5 | 825 | 1 | 120 | CXI330P253211 | CXIT330P253211 | CXI330P2532R11 | CXIT330P2532R11 | CXI330P2532X11 | CXIT330P2532X11 | 15.4 | 7 |
| | | | | 1 | 208 | CXI330P253221 | CXIT330P253221 | CXI330P2532R21 | CXIT330P2532R21 | CXI330P2532X21 | CXIT330P2532X21 | | |
| | | | | 3 | 208 | CXI330P253223 | CXIT330P253223 | CXI330P2532R23 | CXIT330P2532R23 | CXI330P2532X23 | CXIT330P2532X23 | | |
| | | | | 1 | 240 | CXI330P253231 | CXIT330P253231 | CXI330P2532R31 | CXIT330P2532R31 | CXI330P2532X31 | CXIT330P2532X31 | | |
| | | | | 1 | 480 | CXI330P253271 | CXIT330P253271 | CXI330P2532R71 | CXIT330P2532R71 | CXI330P2532X71 | CXIT330P2532X71 | | |
| | | | | 3 | 480 | CXI330P253273 | CXIT330P253273 | CXI330P2532R73 | CXIT330P2532R73 | CXI330P2532X73 | CXIT330P2532X73 | | |
| 1 | | | | 600 | CXI330P253281 | CXIT330P253281 | CXI330P2532R81 | CXIT330P2532R81 | CXI330P2532X81 | CXIT330P2532X81 | | | |
| 3 | | | | 600 | CXI330P253283 | CXIT330P253283 | CXI330P2532R83 | CXIT330P2532R83 | CXI330P2532X83 | CXIT330P2532X83 | | | |
| 4.5 | 39.2 | 995 | 1 | 208 | CXI345P253921 | CXIT345P253921 | CXI345P2539R21 | CXIT345P2539R21 | CXI345P2539X21 | CXIT345P2539X21 | 15.4 | 7 | |
| | | | 3 | 208 | CXI345P253923 | CXIT345P253923 | CXI345P2539R23 | CXIT345P2539R23 | CXI345P2539X23 | CXIT345P2539X23 | | | |
| | | | 1 | 240 | CXI345P253931 | CXIT345P253931 | CXI345P2539R31 | CXIT345P2539R31 | CXI345P2539X31 | CXIT345P2539X31 | | | |
| | | | 1 | 480 | CXI345P253971 | CXIT345P253971 | CXI345P2539R71 | CXIT345P2539R71 | CXI345P2539X71 | CXIT345P2539X71 | | | |
| | | | 3 | 480 | CXI345P253973 | CXIT345P253973 | CXI345P2539R73 | CXIT345P2539R73 | CXI345P2539X73 | CXIT345P2539X73 | | | |
| | | | 1 | 600 | CXI345P253981 | CXIT345P253981 | CXI345P2539R81 | CXIT345P2539R81 | CXI345P2539X81 | CXIT345P2539X81 | | | |
| | | | 3 | 600 | CXI345P253983 | CXIT345P253983 | CXI345P2539R83 | CXIT345P2539R83 | CXI345P2539X83 | CXIT345P2539X83 | | | |
| | | | 1 | 208 | CXI360P255121 | CXIT360P255121 | CXI360P2551R21 | CXIT360P2551R21 | CXI360P2551X21 | CXIT360P2551X21 | | | |
| | | | 3 | 208 | CXI360P255123 | CXIT360P255123 | CXI360P2551R23 | CXIT360P2551R23 | CXI360P2551X23 | CXIT360P2551X23 | | | |
| | | | 1 | 240 | CXI360P255131 | CXIT360P255131 | CXI360P2551R31 | CXIT360P2551R31 | CXI360P2551X31 | CXIT360P2551X31 | | | |
| | | | 1 | 480 | CXI360P255171 | CXIT360P255171 | CXI360P2551R71 | CXIT360P2551R71 | CXI360P2551X71 | CXIT360P2551X71 | | | |
| | | | 3 | 480 | CXI360P255173 | CXIT360P255173 | CXI360P2551R73 | CXIT360P2551R73 | CXI360P2551X73 | CXIT360P2551X73 | | | |
| | | | 1 | 600 | CXI360P255181 | CXIT360P255181 | CXI360P2551R81 | CXIT360P2551R81 | CXI360P2551X81 | CXIT360P2551X81 | | | |
| | | | 3 | 600 | CXI360P255183 | CXIT360P255183 | CXI360P2551R83 | CXIT360P2551R83 | CXI360P2551X83 | CXIT360P2551X83 | | | |

Special Features (Check Factory)

Heaters With Built-in Thermostats

All screwplug heaters listed are available with built-in thermostats. Heaters with thermostats have a "T" added to their catalog no. prefix. Standard thermostat range is 50°F to 250°F (10°C to 120°C). Ratings are normally 25 amps at 240V single pole single throw. 600V thermostats and double pole thermostats are available on special order.

Special Thermostat Ranges

Thermostats with the following temperature ranges are also available upon request:

- 0°F to 100°F (-18°C to 40°C)
- 150°F to 550°F (70°C to 280°C)
- 300°F to 700°F (150°C to 370°C)

Terminal Housings

Shown below are the different types of terminal housings used with screwplug heaters.

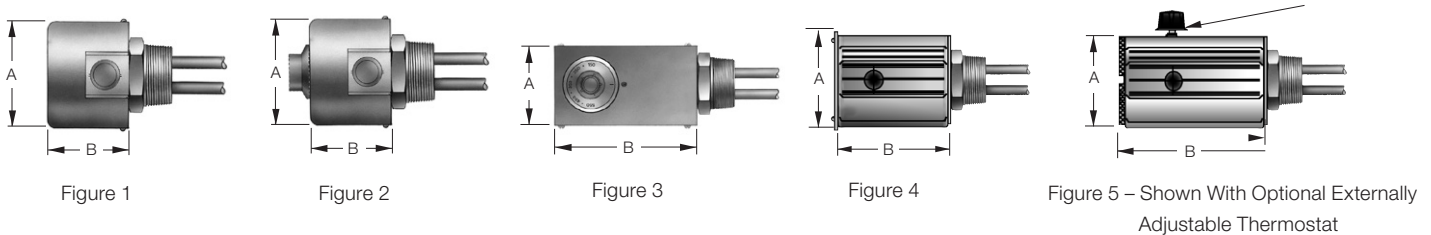


Table 6 – Terminal Housings

| Description | Figure | 'A' | | 'B' | |
|---|--------|-------|-----|-------|-----|
| | | in | mm | in | mm |
| Standard Housing Without Thermostat | 1 | 4.000 | 102 | 2.750 | 70 |
| Standard Thermostat Housing (1 Pole) | 2 | 4.000 | 102 | 4.000 | 102 |
| Special Thermostat Housing | 3 | 4.125 | 106 | 7.000 | 180 |
| Moisture Resistant Housing with 1 Pole Thermostat or without Thermostat | 4 | 4.250 | 108 | 7.250 | 185 |
| Moisture Resistant Housing with 2 Pole Thermostat | 4 | 4.250 | 108 | 8.500 | 215 |
| Explosion-Proof Housing with 1 Pole Thermostat or without Thermostat | 5 | 4.250 | 108 | 8.000 | 205 |
| Explosion-Proof Housing with 2 Pole Thermostat | 5 | 4.250 | 108 | 9.250 | 235 |

Voltage

Custom built heaters are available in any special voltage rating up to 600V.

Wattage

Heaters listed are standard wattage. Any reasonable wattage is available to replace your present heater with a similar Caloritech™ unit.

Length

Heaters are available with immersed lengths up to 135" (3430 mm). Internal vessel support must be used when immersed length exceeds 49" (1245 mm).

Plug Sizes and Ratings

Thermon Heating Systems can install elements in virtually any size or rating of plug, special or standard.

Special Materials

Special sheath, plug and terminal box materials are available on request.

Welded Elements

While welded elements are standard for CXI heaters, CXF heaters listed have the elements silver brazed to the plug which suits most applications. Thermon Heating Systems can provide listed CXF heaters with elements welded to the plug.

Built-in Thermostat Well

Built-in thermostat wells are available. Specify length and internal diameter required.

Heaters ordered with explosion-proof or moisture resistant housings have built-in wells as standard.

Passivation

Incoloy® and stainless steel sheathed heaters are available with chemically passivated sheaths which will provide superior corrosion resistance in most applications. Passivation is achieved through an electropolishing technique.

Heaters with stainless steel plugs are available with all wetted surfaces passivated.

Moisture Resistant Terminal Housings

Moisture resistant terminal housings suitable for outdoor applications are available for all heater sizes. See Figure 4 on page B20.

Explosion-Proof Terminal Housings

If the heater is to be operated in a hazardous environment an explosion-proof housing must be used. See Figure 5 on page B20. Specify Class, Div. (or Zone), Group and Temp. Code for the hazardous location.